

ANGULAR POURING BASIN, SIDE FILL, VARIABLE UPPER COMPONENT



Side fill pouring basins are used when interferences of the structure will not allow top filling of the sleeve. Variable angle side fill pouring basins are used when one of the predefined angle pouring basins is not available or when a project has multiple reinforcing steel angles.

The upper component is universal to all sleeve sizes and is always used in conjunction with the bottom component.

功能

Made from heat-resistant graphite

Durable, re-usable and long lasting

SPECIFICATIONS

Table 1/2

物料号	材料	直径 (Ø)	长度 1 (L1)	Length 2 (L2)	宽度 (W)	高度 1 (H1)
RBWS2468	石墨	58 mm	159 mm	114 mm	76 mm	273mm

Table 2/2

物料号	Height 2 (H2)
RBWS2468	102mm

ADDITIONAL PRODUCT DETAILS

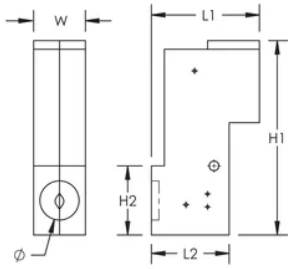
RBWS2468 pouring basins require one RBW350 and one RBW734 pouring basin frame and one RBS5000 bolt retainer (sold separately).

Contact nVent LENTON for assistance in sleeve selection.

Prior to installation, please read and understand all of the detailed instructions and safety notices provided in the nVent LENTON Cadweld Rebar Splicing System instruction manual.

Sizes not shown may be available by special order. Contact your nVent LENTON representative for more information.

DIAGRAMS



警告

应仅根据 nVent 的产品说明书与培训材料安装并使用 nVent 的产品。可访问 www.nvent.com 获取说明书，或者向您的 nVent 客服代表索取。错误安装、使用不当、滥用或未能完全遵守 nVent 的说明与警告，可能会造成产品故障、财产损失、严重的人身伤害及死亡和/或使得保修服务无效。

北美

+1.800.753.9221
Option 1 - Customer Care
Option 2 - Technical
Support

欧洲

Netherlands:
+31 800-0200135
France:
+33 800 901 793

欧洲

Germany:
800 1890272
Other Countries:
+31 13 5835404

APAC

Shanghai:
+ 86 21 2412 1618/19
Sydney:
+61 2 9751 8500



Our powerful portfolio of brands:
nVent.com CADDY ERICO HOFFMAN RAYCHEM SCHROFF TRACER

© 2025 nVent. All nVent marks and logos are owned or licensed by nVent Services GmbH or its affiliates. All other trademarks are the property of their respective owners.

nVent reserves the right to change specifications without notice.