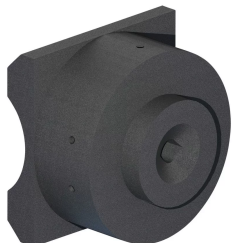


ANGULAR POURING BASIN, SIDE FILL, VARIABLE BOTTOM COMPONENT



Side fill pouring basins are used when interferences of the structure will not allow top filling of the sleeve. Variable angle side fill pouring basins are used when one of the predefined angle pouring basins is not available or when a project has multiple reinforcing steel angles.

The bottom component is defined by the sleeve diameter and is always used in conjunction with the upper component.

功能

Made from heat-resistant graphite

Durable, re-usable and long lasting

SPECIFICATIONS

材料: 石墨

Table 1/1

物料号	直径 (Ø)	长度 (L)	宽度 (W)	高度 (H)
RBWS2401F	64 mm	71 mm	102 mm	102 mm
RBWS2401M	95 mm	71 mm	102 mm	102 mm

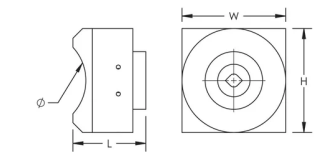
ADDITIONAL PRODUCT DETAILS

RBWS2401 pouring basins require one RBW313B pouring basin frame (sold separately).

Prior to installation, please read and understand all of the detailed instructions and safety notices provided in the nVent LENTON Cadweld Rebar Splicing System instruction manual.

Sizes not shown may be available by special order. Contact your nVent LENTON representative for more information.

DIAGRAMS



警告

应仅根据 nVent 的产品说明书与培训材料安装并使用 nVent 的产品。可访问 www.nvent.com 获取说明书，或者向您的 nVent 客服代表索取。错误安装、使用不当、滥用或未能完全遵守 nVent 的说明与警告，可能会造成产品故障、财产损失、严重的人身伤害及死亡和/或使得保修服务无效。

北美	欧洲	欧洲	APAC
+1.800.753.9221	Netherlands:	Germany:	Shanghai:
Option 1 - Customer Care	+31 800-0200135	800 1890272	+ 86 21 2412 1618/19
Option 2 - Technical	France:	Other Countries:	Sydney:
Support	+33 800 901 793	+31 13 5835404	+61 2 9751 8500