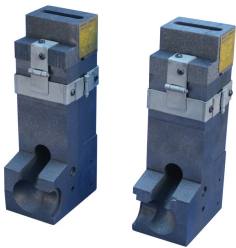


CABLE TO WEB OF RAIL MOLD PAIR, POWER, 85-141 LB T-RAIL, 4/0 ROPELAY

目录编号

PBW2S



功能

Replacement mold pair designed for the installation of track circuits and jumper bonds to the neutral axis

Sold in pairs

产品属性

材料: Graphite

轨道类型: 85 lb to 141 lb T-Rail Sections

绑线终端样式: W

导体尺寸: 4/0 Ropelay

导体公称外径: 15.49mm

焊机式样: T20

仅模具: Yes

焊药: PB90, Sold Separately

Handle Clamp: C105C, Sold Separately

导体套管: S02F, Sold Separately

锤锻模具: WD83, Sold Separately

警告

应仅根据 nVent 的产品说明书与培训材料安装并使用 nVent 的产品。可访问 www.nvent.com 获取说明书，或者向您的 nVent 客服代表索取。错误安装、使用不当、滥用或未能完全遵守 nVent 的说明与警告，可能会造成产品故障、财产损失、严重的人身伤害及死亡和/或使得保修服务无效。



Our powerful portfolio of brands:
nVent.com CADDY ERICO HOFFMAN RAYCHEM SCHROFF TRACER

© 2025 nVent. All nVent marks and logos are owned or licensed by nVent Services GmbH or its affiliates. All other trademarks are the property of their respective owners.

nVent reserves the right to change specifications without notice.