

FLEXBUS CONDUCTOR REP, 960 MM², 6000 MM X 50 MM X 50 MM X 25 MM X 26,7 KG

目录编号

FLEXCORE960L6



The nVent ERIFLEX Flexbus Conductor with Rodent and Termite Repellent is designed for easy, one-sided use with a direct connection to a busbar or circuit-breaker palm. This innovative and patented solution provides a reliable connection between two pieces of electrical equipment, such as a transformer, switchboard, or generator. The Flexbus Advanced solution ensures high reliability and offers a customizable on-site connection without the need for additional design studies, specialized workforce, or expensive tools. The Flexbus Conductor is insulated with a low-smoke, halogen-free, flame-retardant (LSHFRR), high-temperature, and class II material. It is a flexible, copper-plated, aluminum flat braid available in lengths from 2 to 25 meters and in various cross sections for 500A to 6300A applications. This conductor allows for connection from the power supply to switchgear with only one conductor per phase up to 1600kVA and with two conductors per phase up to 3150kVA.

CERTIFICATIONS



功能

Flexible, insulated, copper-plated aluminum flat braid

Better current/ampacity compared to cable due to the skin effect

Significantly more flexible than cable

No need to adhere to a bending radius

Ready-to-use from one side with a direct connection to a busbar or circuit breaker palm

Requires only one conductor per phase for 400kVA (560 A) to 1600kVA (2250 A) and two conductors per phase for 2000kVA (2800 A) to 3150kVA (4435 A)

Insulation sleeve contains a special additive that makes the Flexbus conductor resistant to rodents and termites

产品属性

Article Number: 508524

横截面: 960mm²

长度 1 (L1): 6000mm

长度 2 (L2): 100mm

导体材料: Copper Clad Aluminum

绝缘材料: Thermoplastic Elastomer

Rodent & Termite Proof: Tested as per GB/T 34016-2017 & DIN EN 117

连接器表面处理: Tinned

连接器材料: Copper

绝缘材料伸长率: 500% min

绝缘厚度: 2.5 – 3.5mm

无卤等级: UL® 2885; IEC® 60754-1; IEC® 62821-2

机械强度等级: IK09

抗紫外线等级: UL® 2556; UL® 854

低烟等级: IEC® 61034-2; ISO 5659-2; UL® 2885

介电强度: 20kV/mm

阻燃: UL® 94V-0

Wire Diameter: 0.2mm

电线直径: 0.2mm

额定电压, IEC: 1000V; 5000V

最大工作电压, EN 50264-3-1: 6000V

工作温度: -50 to 115°C

符合: IEC® 60695-2-11 (Glow Wire Test 960 °C); IEC® 61439.1; IEC® 61439.1 Class II; IEC® 60364

ΔT 60 K: 1761A

宽度 1 (W1): 108mm

宽度 2 (W2): 100mm

高度 1 (H1): 28.15mm

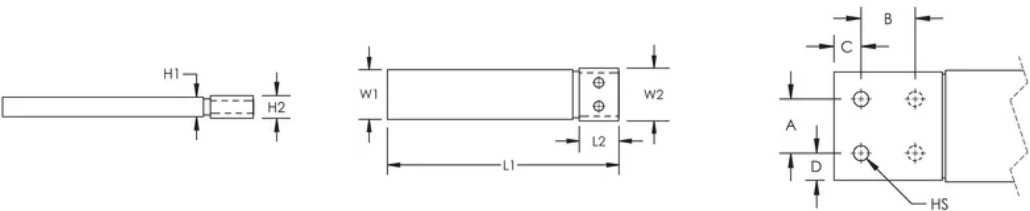
高度 2 (H2): 14.8mm
孔尺寸 (HS): 14mm
元件重量: 26.7kg
A: 50mm
B: 50mm
C: 25mm
D: 25mm
2排并联载流系数，非对称: 1.48
2排并联载流系数，对称: 2
安装标准: AS 3008; BS 7671; CEI 64-8; CSN; DIN VDE 0100; HD 384; IEC® 60364; NBR 5410; NEN 1010; NFC 15-100; NIBT-NIN; NP (2002); ÔNORM; REBT; RGIE-AREI

ADDITIONAL PRODUCT DETAILS

Optional extender available for more connection possibilities.

根据温升的载流系数								
温升	ΔT 30°C	ΔT 40°C	ΔT 45°C	ΔT 50°C	ΔT 55°C	ΔT 60°C	ΔT 65°C	ΔT 70°C
降容系数	0.71	0.82	0.87	0.91	0.96	1.00	1.04	1.08

DIAGRAMS



警告

应仅根据 nVent 的产品说明书与培训材料安装并使用 nVent 的产品。可访问 www.nvent.com 获取说明书，或者向您的 nVent 客服代表索取。错误安装、使用不当、滥用或未能完全遵守 nVent 的说明与警告，可能会造成产品故障、财产损失、严重的人身伤害及死亡和/或使得保修服务无效。



Our powerful portfolio of brands:
[nVent.com](https://www.nVent.com) CADDY ERICO HOFFMAN RAYCHEM SCHROFF TRACER

© 2025 nVent. All nVent marks and logos are owned or licensed by nVent Services GmbH or its affiliates. All other trademarks are the property of their respective owners.

nVent reserves the right to change specifications without notice.