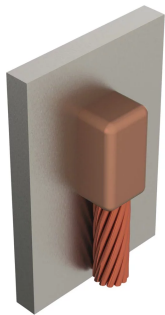


## CABLE TO STEEL, HEAVY DUTY, VB, STEEL PIPE OR FLAT SURFACE, #2 CONCENTRIC

### KATALOGNUMMER

## HDVBC1V



Heavy duty connections were originally developed to be used on reclaimed cable. The heavy duty connections use a larger size connection cavity in the mold and a larger size welding material than the equivalent standard duty connection.

The larger size welding material supplies extra BTU's to melt the heavy oxide coating on the conductor and to overcome some severe field conditions. Heavy duty connections eliminate cutting the run conductor on certain types of connections, reduce cable cleaning requirements for old or reclaimed cable, and increase reliability under adverse field conditions.

Heavy duty connections are increasingly being specified for copper-coated steel conductor connections.

### CERTIFICATIONS



### DESIGN

Forms a permanent, low resistance connection

Provides a molecular bond

nVent ERICO Cadweld Exothermic Connections are rated with the same current capacity as the conductor

Portable installation equipment with no external source of power required

Installers can be easily trained to make nVent ERICO Cadweld Exothermic Connections

Connections can be visually inspected

### PRODUKTATTRIBUT

Mold Family: VB Mold Family

Connects To: Steel Pipe or Flat Surface

Conductor Size: #2 Concentric

Conductor Outer Diameter, Nominal: 7.42mm

Pipe Size: 24in min

Outer Diameter (OD): 609.6mm min

NB/DN: 600 min

Mold Split: Vertical

Split Crucible: No

Wear Plates: No

Mold Only: No

Welding Material: 115 or 115PLUSF20, Sold Separately

Handle Clamp: L160 or B396, Sold Separately

Price Key: C

Ease of Use: Easy

## ADDITIONAL PRODUCT DETAILS

For applications such as computer room, tunnel or other low-ventilation areas, specify a smokeless nVent ERICO Cadweld Exolon mold. Add an XL prefix to the standard mold part number when ordering (for example, a TAC2Q2Q becomes XLTAC2Q2Q). Similarly, nVent ERICO Cadweld Exolon welding material is also designated by the XL prefix (for example, 150 becomes XL150).

A test weld should be made to check for the possibility of burn through on thin sections and to determine detrimental metallurgical effects.

HD-XX-X-XX-XX-L-M-W		
HD	Heavy Duty Designation	
XX	Mold Family	
X	Price Key	
XX	Conductor Code	
XX	Pipe Size	
L*	Split Crucible	Crucible section is split on molds designed with horizontal opening for easier cleaning
M*	Mold Only	
W*	Wear Plates	Reduce mechanical abrasion of molds at cable entry points

\* Empty if none



### VARNING

---

nVent produkter ska installeras och användas endast så som anges i nVents bruksanvisning och utbildningsmaterial. Bruksanvisningar är tillgängliga på [www.nvent.com](http://www.nvent.com) och från din nVent kundtjänstrepresentant. Felaktig installation, missbruk, felapplicering eller annan brist i att helt följa nVents instruktioner och varningar kan orsaka att produkten brister, egendomsskador, allvarliga kroppsskador och dödsfall och/eller ogiltigförklara din garanti.



Our powerful portfolio of brands:  
**nVent.com CADDY ERICO HOFFMAN RAYCHEM SCHROFF**  
**TRACER**