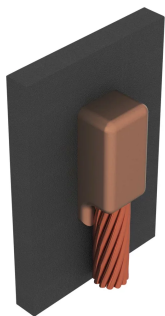


CABLE TO METAL SURFACE, CATHODIC, VJ, CAST IRON PIPE OR FLAT SURFACE, #2 CONCENTRIC, 24" MIN PIPE

KATALOGNUMMER

CAVJP1V



nVent ERICO Cadweld Cathodic Connections are the preferred method of exothermically welding cathodic protection anode leads to pipes (steel or cast iron), tanks, and other structures. Cathodic protection systems are designed to prevent galvanic corrosion along a pipeline or in various structures. nVent ERICO Cadweld Cathodic Connections use a special welding material alloy to minimize heat effect on the steel, which is especially important on thin wall and high stress pipes.

DESIGN

Forms a permanent, low resistance connection

Provides a molecular bond

nVent ERICO Cadweld Exothermic Connections are rated with the same current capacity as the conductor

Portable installation equipment with no external source of power required

Installers can be easily trained to make nVent ERICO Cadweld Exothermic Connections

Connections can be visually inspected

PRODUKTATTRIBUT

Mold Family: VJ Mold Family

Connects To: Cast Iron Pipe or Flat Surface

Conductor Size: #2 Concentric

Conductor Outer Diameter, Nominal: 7.42mm

Pipe Size: 24in min

Outer Diameter (OD): 655.3mm min

NB/DN: 600 min

Mold Split: Vertical

Split Crucible: No

Wear Plates: No

Mold Only: No

Welding Material: CA45XF19 and CA45PLUSXF19, Sold Separately

Handle Clamp: Mini EZ Attached

Price Key: P

Ease of Use: Easy

ADDITIONAL PRODUCT DETAILS

For applications such as computer room, tunnel or other low-ventilation areas, specify a smokeless nVent ERICO Cadweld Exolon mold. Add an XL prefix to the standard mold part number when ordering (for example, a TAC2Q2Q becomes XLTAC2Q2Q). Similarly, nVent ERICO Cadweld Exolon welding material is also designated by the XL prefix (for example, 150 becomes XL150).

A test weld should be made to check for the possibility of burn through on thin sections and to determine detrimental metallurgical effects.

Use XF19 or PLUSXF19 welding material on connections to ductile iron.

W-CA-XX-X-XX-LH-XX-L-M		
W*	Wear Plates	Reduce mechanical abrasion of molds at cable entry points
CA	Cathodic Designation	
XX	Mold Family	
X	Price Key	
XX	Conductor Size	
LH	Weld End	LH = Weld on left end of conductor RH = Weld on right end of conductor (For VN Mold Family only)
XX	Pipe Size	
L*	Split Crucible	Crucible section is split on molds designed with horizontal opening for easier cleaning
M*	Mold Only	

* Empty if none

DIAGRAMS



VARNING

nVent produkter ska installeras och användas endast så som anges i nVents bruksanvisning och utbildningsmaterial. Bruksanvisningar är tillgängliga på www.nvent.com och från din nVent kundtjänstrepresentant. Felaktig installation, missbruk, felapplicering eller annan brist i att helt följa nVents instruktioner och varningar kan orsaka att produkten brister, egendomsskador, allvarliga kroppsskador och dödsfall och/eller ogiltigförklara din garanti.



Our powerful portfolio of brands:
nVent.com CADDY ERICO HOFFMAN RAYCHEM SCHROFF
TRACER