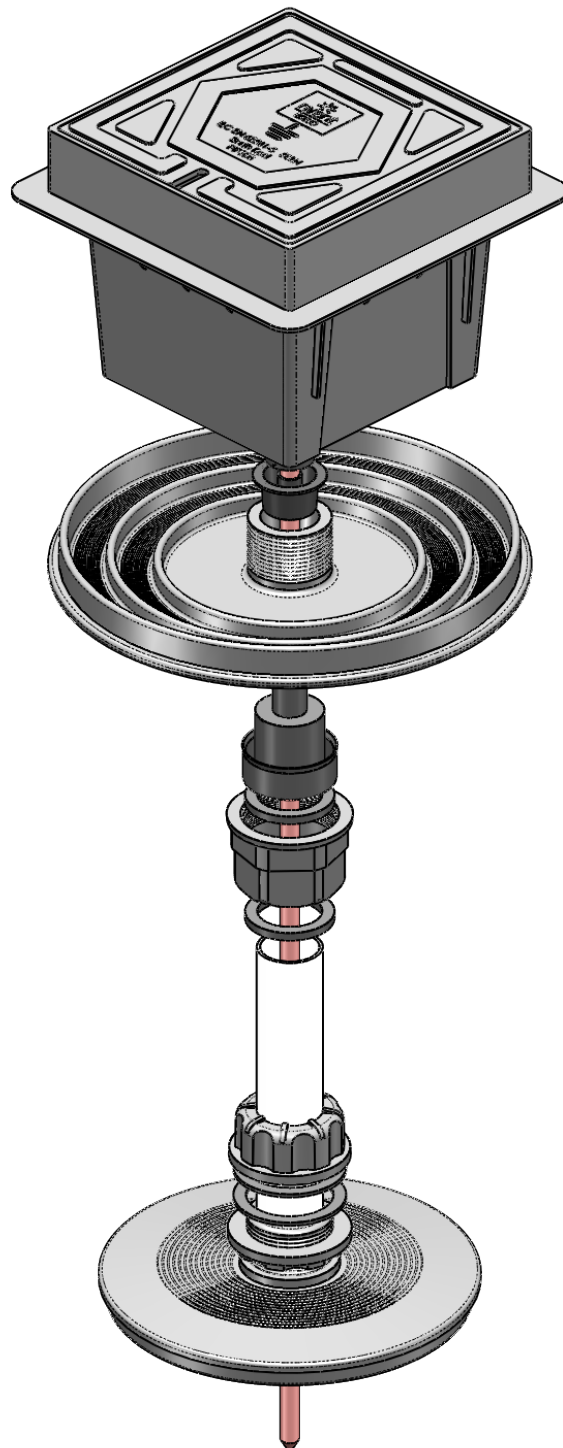


Earth Sealing ESA308

with components PIP308 + ESPxx + ESAPIPE

Instruction Sheet

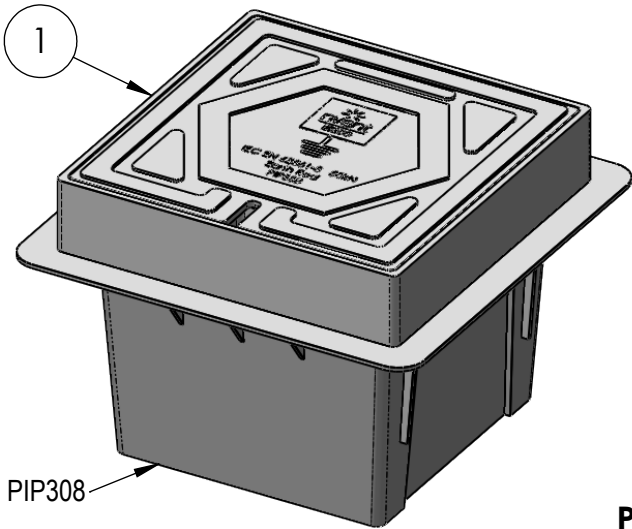
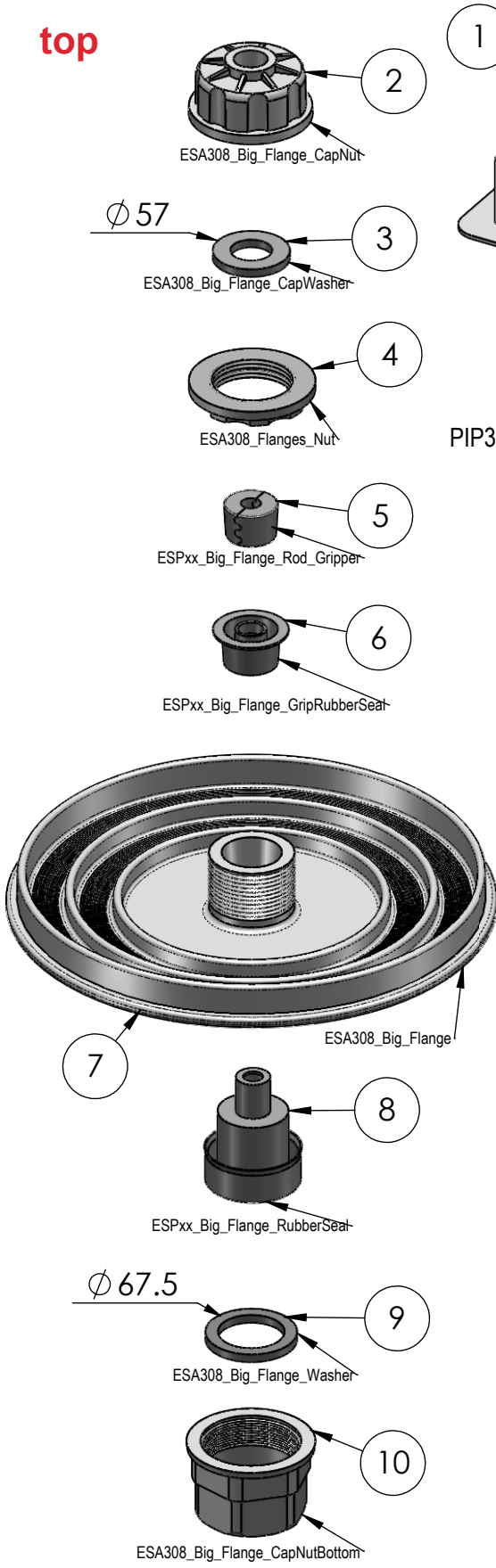


INSTRUCTION SHEET

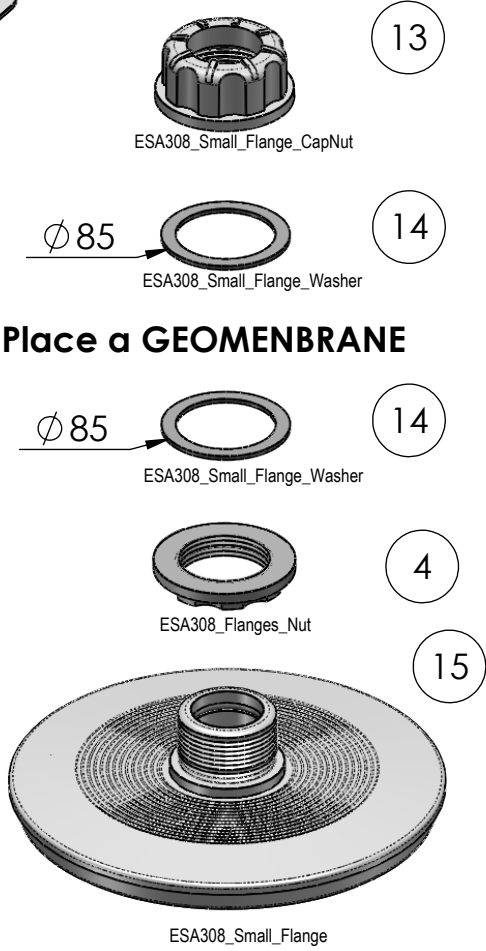
Earth Sealing ESA308
with components PIP308 + ESPxx + ESAPIPE

BOM

top

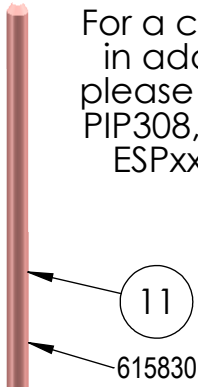


bottom

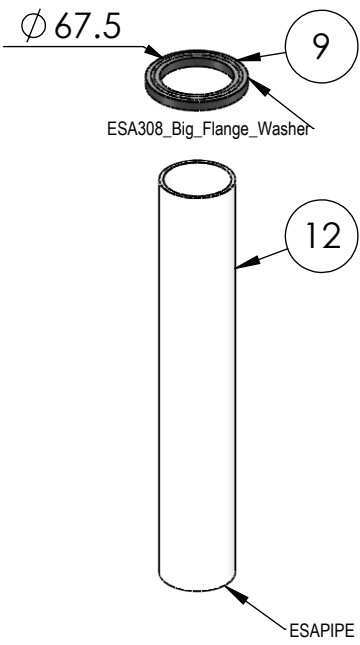


Place a GEOMENBRANE

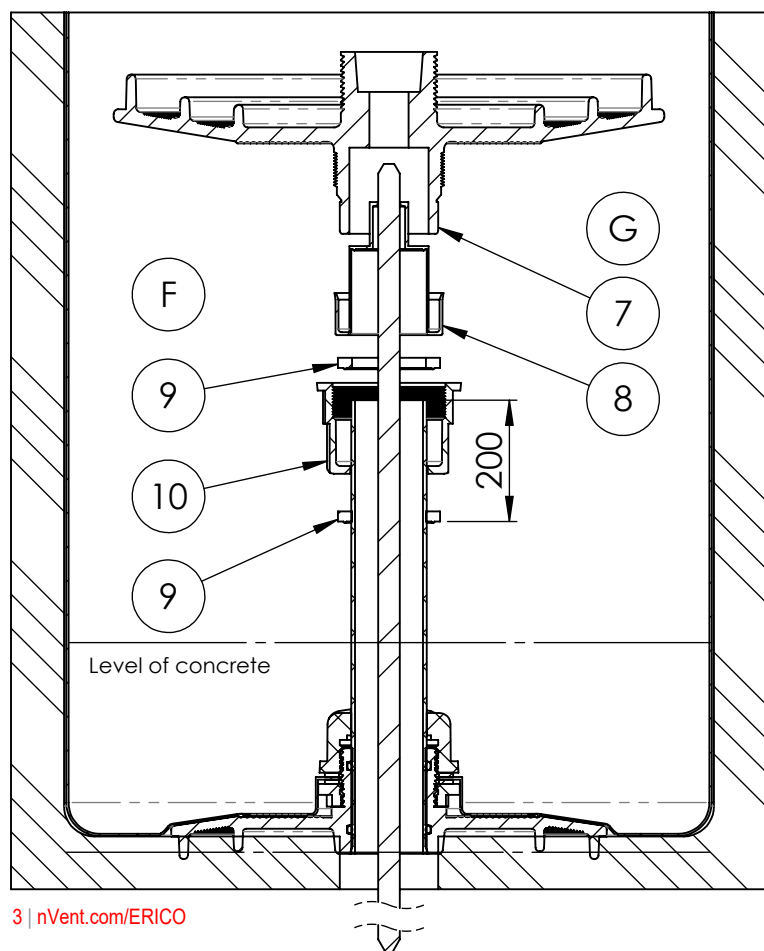
For a complete sealing,
in addition to ESA308
please include earth pit
PIP308, ESAPIPE, sealing
ESPxx and earth rod



earth rod in combination with ESP	
ESPxx	use with
ESP15	5/8", SCR15
ESP20	SCR20
ESP34	3/4"



item	PART No.	QTY.
1	PIP308	1
2	ESA308_Big_Flange_CapNut	1
3	ESA308_Big_Flange_CapWasher	1
4	ESA308_Flanges_Nut	2
5	ESPxx_Big_Flange_Rod_Gripper	1
6	ESPxx_Big_Flange_GripRubberSeal	1
7	ESA308_Big_Flange	1
8	ESPxx_Big_Flange_RubberSeal	1
9	ESA308_Big_Flange_Washer	2
10	ESA308_Big_Flange_CapNutBottom	1
11	615830	1
12	ESAPIPE	1
13	ESA308_Small_Flange_CapNut	1
14	ESA308_Small_Flange_Washer	2
15	ESA308_Small_Flange	1



A : Make the hole for the complete installation including earthpit. Cut a 65 mm diameter hole at the desired location of the geo membrane sheet **16**.

B : Place the earthrod **11** at 100mm from ground level

C : Insert the PVC pipe **12** through the top end of Cap Nut **13** till it passes through the small flange **15** touches the soil. You may insert 15cm of concrete to fix and cover the bottom part, small flange **15** and elements mentioned above.

Elements can be mounted outside the hole and place the PVC pipe **12** concentric to the the earthrod .

The top of the PVC pipe **12** will be at 257mm aprox. of the top or the Earthpit PIP308.

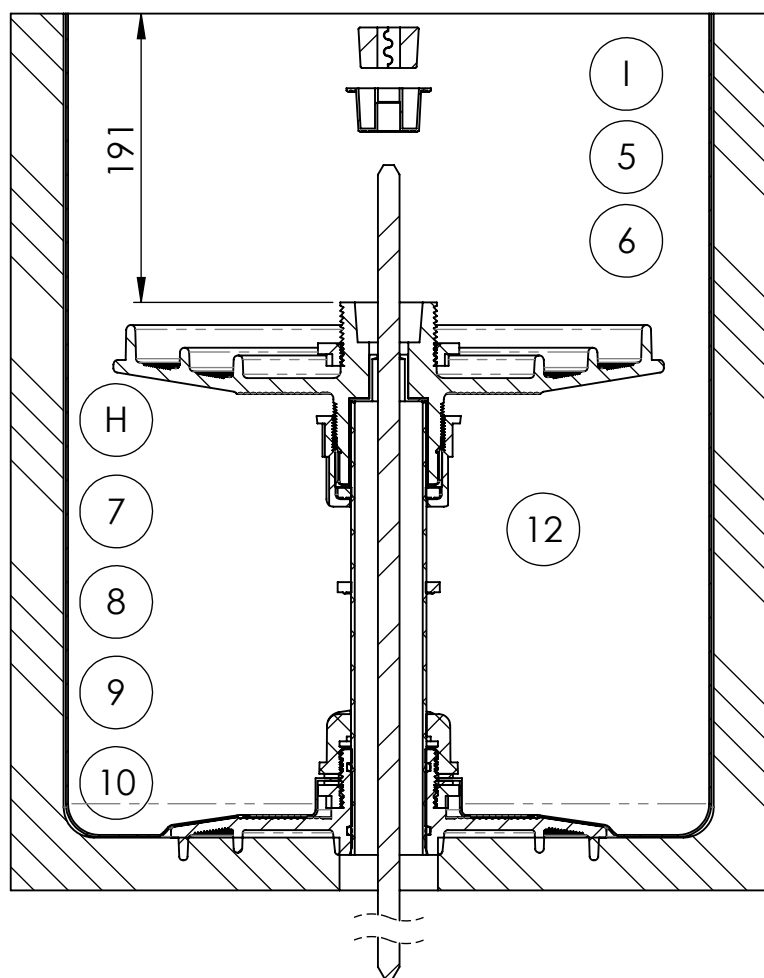
D : Place the assembly of Small Flange **15** + Threaded Nut **4** + Washer **14** of the earth seal set on the location of the earth pit.

E : Then place the cut hole of the geo membrane **16** on the Small Flange assembly & lock it in place with the second Washer **14** over the geo membrane **16** and place the Cap Nut **13**. Then spread out the geo membrane **16** as required & lock it in place.

F : Insert Washer **9** on the top end of the PVC pipe to approx. 200mm from the top edge of the pipe. Then insert Cap Nut **10** + Washer **9** assembly (with its open end up) into the PVC pipe & let it rest on Washer 3.

Nota: You may place a first level of concrete if all bottom components of **15** are well fixed to the geo membrane **16**. You can fill GEM into the pipe **12**

G : Take the Big Flange **7** and insert Seal **8** into its bottom cavity till it fits properly inside.



STEPS H to J

H : Place Big Flange (7) with Rubber Seal (8) over the top end of Pipe (12). Insert & tighten Cap Nut (10) to the Big Flange (7) till the pipe touches the inside. Washer (9) is between.

I Place Grip Rubber Seal (6) into the upper cavity of Big Flange (7). Place the Flange Rod Gripper (5) into the Grip Rubber Seal (6)

J : Place the Earth Pit Chamber (1) on the Big Flange (7). Be sure that the upper part is at ground level. Put Cap Washer (3) into the CapNut (2) and tighten it to the Big Flange (7) maintaining in position the Earth Pit

1

- Insert the Earthing conductor through the precut slot/hole of the Earth Pit Chamber & connect it to the earth rod. Use a sealant to seal the gaps between the precut slot/hole & the Earthing conductor.

- You can use Earthbar BEP25X5X200 or clamp UB20 for conductor connections.

- Close & lock the lid of the Earth Pit Chamber.

- Put the concrete as required till the top edge of the Earth Pit Chamber & let it set.

Links to mentioned products:

PIP308

ESAPIPE

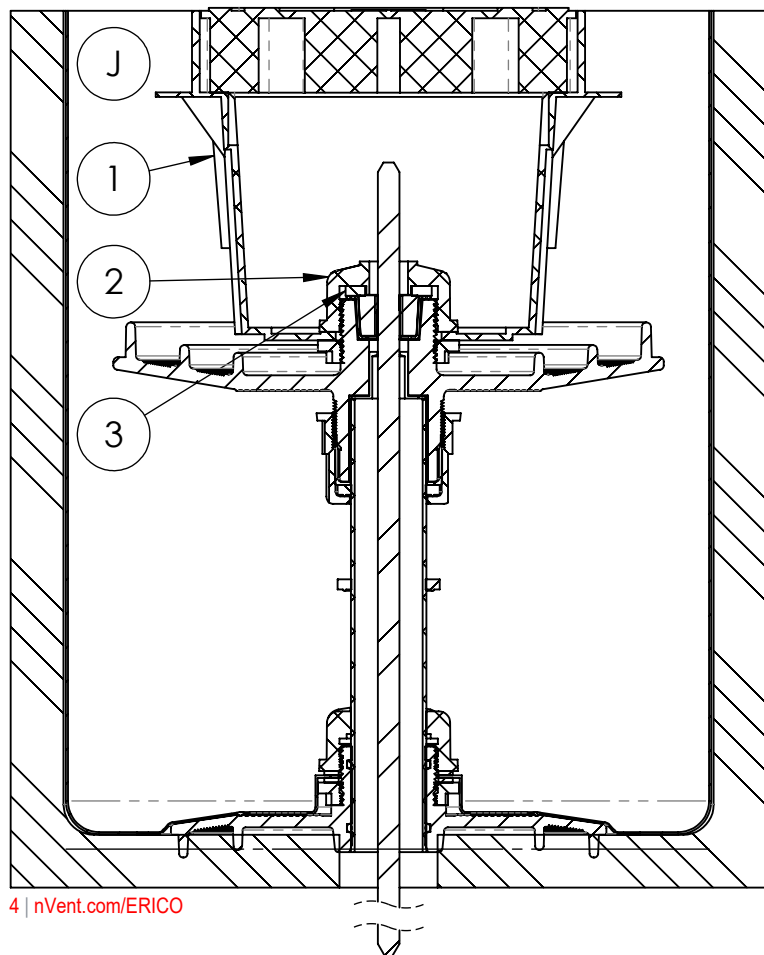
ESPxx Earth Rod Seal Pack

BEP25X5X200

UB20

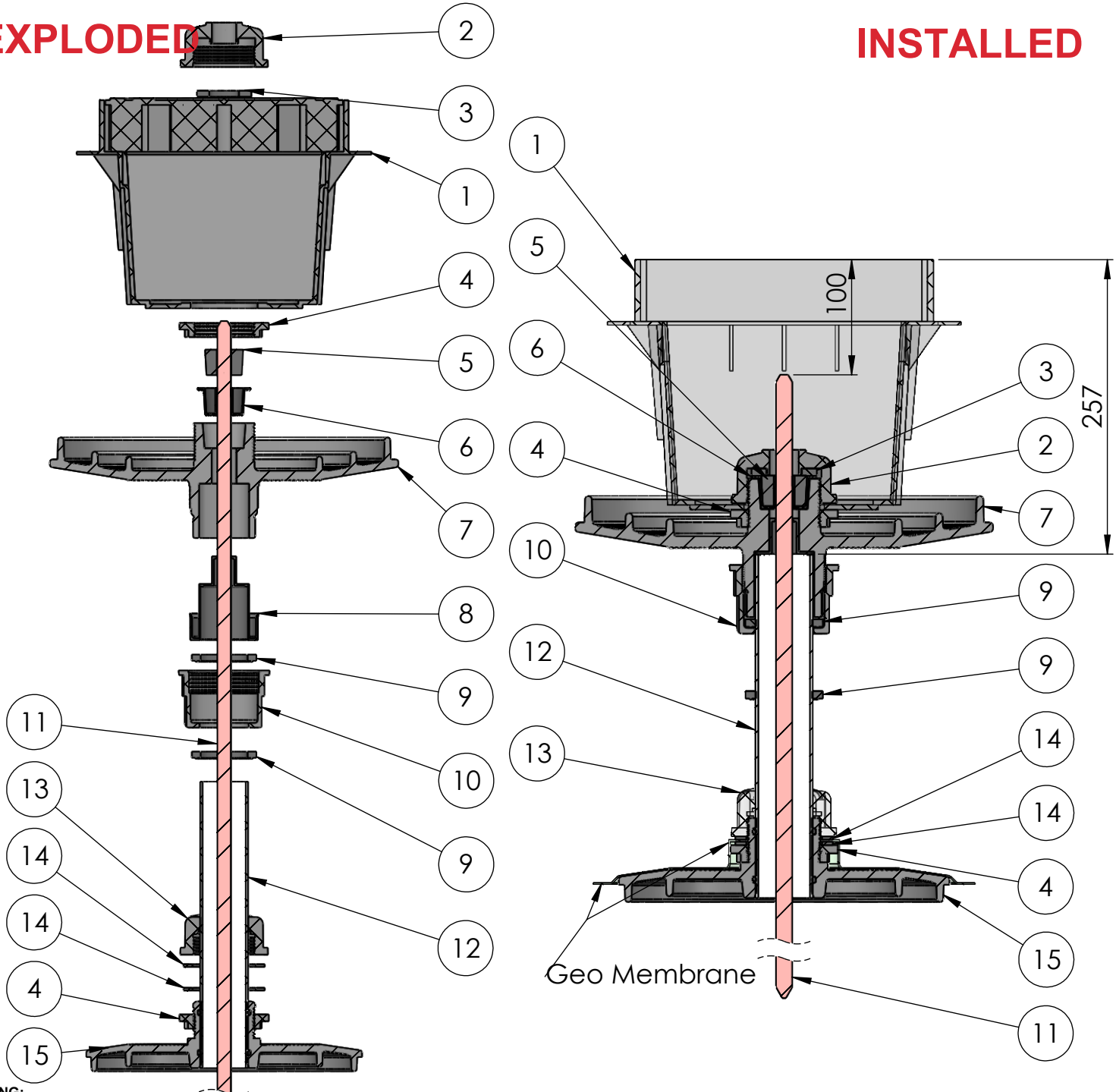
SCR copper rods

GEM25A



EXPLODED

INSTALLED



WARNING:

1. nVent products shall be installed and used only as indicated in nVent product instruction sheets and training materials. Instruction sheets are available at www.nVent.com and from your nVent customer service representative.
2. nVent products must never be used for a purpose other than the purpose for which they were designed or in a manner that exceeds specified load ratings.
3. All instructions must be completely followed to ensure proper and safe installation and performance.
4. Improper installation, misuse, misapplication or other failure to completely follow nVent's instructions and warnings may cause product malfunction, property damage, serious bodily injury and/or death, and void your warranty.

SAFETY INSTRUCTIONS: All governing codes and regulations and those required by the job site must be observed. Always use appropriate safety equipment such as eye protection, hard hat, and gloves as appropriate to the application.



Our powerful portfolio of brands:

CADDY

ERICO

HOFFMAN

ILSCO

RAYCHEM

SCHROFF