

# PEMSA WIRE BASKET TRAY UNIVERSAL PART CLAMP



## CERTIFICATIONS



## FEATURES

- Significant mechanical clamping strength
- Captive screw
- IEC 61537 load rating and earthing compliant

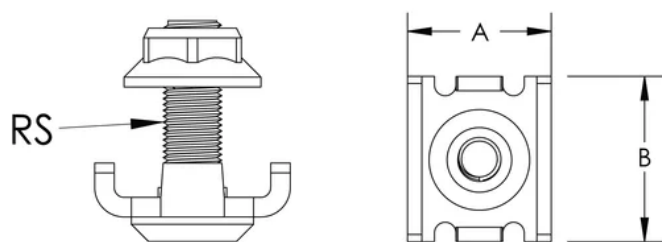
## SPECIFICATIONS

- Color:** Black
- Finish:** Electrogalvanized
- Material:** Steel

Table 1/1				
Catalog Number	Article Number	Rod Size (RS)	A	B
WBTUPCBG	820717	6	20mm	23mm
WBTUPCEG	820716	6	20mm	23mm

## DIAGRAMS

---



## WARNING

---

nVent products shall be installed and used only as indicated in nVent's product instruction sheets and training materials. Instruction sheets are available at [www.nvent.com](http://www.nvent.com) and from your nVent customer service representative. Improper installation, misuse, misapplication or other failure to completely follow nVent's instructions and warnings may cause product malfunction, property damage, serious bodily injury and death and/or void your warranty.



Our powerful portfolio of brands:  
**nVent.com CADDY ERICO HOFFMAN RAYCHEM SCHROFF**  
**TRACER**