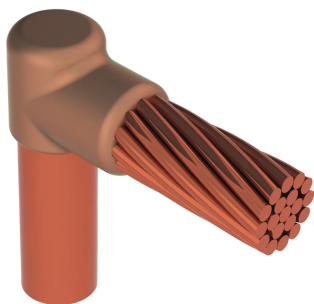


CABLE TO GROUND ROD OR OTHER ROUNDS, CATHODIC, GR, COPPER-BONDED, 5/8" DIA, #6 CONCENTRIC

CODICE A CATALOGO

CAGRT161H



nVent ERICO Cadweld Cathodic Connections are the preferred method of exothermically welding cathodic protection anode leads to pipes (steel or cast iron), tanks, and other structures. Cathodic protection systems are designed to prevent galvanic corrosion along a pipeline or in various structures. nVent ERICO Cadweld Cathodic Connections use a special welding material alloy to minimize heat effect on the steel, which is especially important on thin wall and high stress pipes.

CARATTERISTICHE

Forms a permanent, low resistance connection

Provides a molecular bond

nVent ERICO Cadweld Exothermic Connections are rated with the same current capacity as the conductor

Portable installation equipment with no external source of power required

Installers can be easily trained to make nVent ERICO Cadweld Exothermic Connections

Connections can be visually inspected

ATTRIBUTI DEL PRODOTTO

Mold Family: GR Mold Family

Ground Rod Type: Copper-bonded

Ground Rod Diameter, Nominal: 0.625in

Ground Rod Diameter, Actual (Ø): 14.3mm

Conductor Size: #6 Concentric

Conductor Outer Diameter, Nominal: 4.67mm

Mold Split: Vertical

Split Crucible: No

Wear Plates: No

Mold Only: No

Welding Material: CA32 or CA32PLUSF33, Sold Separately

Handle Clamp: Mini EZ Attached

Price Key: T

Ease of Use: Preferred

ADDITIONAL PRODUCT DETAILS

For applications such as computer room, tunnel or other low-ventilation areas, specify a smokeless nVent ERICO Cadweld Exolon mold. Add an XL prefix to the standard mold part number when ordering (for example, a TAC2Q2Q becomes XLTAC2Q2Q). Similarly, nVent ERICO Cadweld Exolon welding material is also designated by the XL prefix (for example, 150 becomes XL150).

A gap between conductors may be required. See mold tag for more information.

Use XF19 or PLUSXF19 welding material on connections to ductile iron.

CA-XX-X-XX-XX-L-M-W		
CA	Cathodic Designation	
XX	Mold Family	
X	Price Key	
XX	Ground Rod Code	
XX	Conductor Code	
L*	Split Crucible	Crucible section is split on molds designed with horizontal opening for easier cleaning
M*	Mold Only	
W*	Wear Plates	Reduce mechanical abrasion of molds at cable entry points

* Empty if none

DIAGRAMS



AVVERTIMENTO

I prodotti nVent devono essere installati e utilizzati solo come indicato nelle schede istruzioni e nei materiali di formazione di nVent. Le schede istruzioni sono disponibili su www.nvent.com e presso il vostro rappresentante del servizio clienti nVent. Un'installazione scorretta, un uso improprio, un'applicazione errata o qualsiasi altro mancato rispetto completo delle istruzioni e degli avvertimenti di nVent può causare malfunzionamenti del prodotto, danni alla proprietà, gravi lesioni personali e morte e/o annullare la vostra garanzia.



Our powerful portfolio of brands:
nVent.com CADDY ERICO HOFFMAN RAYCHEM SCHROFF
TRACER