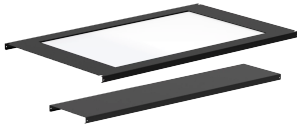


## PROLINE CONTAINMENT SYSTEM WINDOW CEILING PANEL



Window Ceiling Panels have easily modified, .22-inch (6 mm) polycarbonate panels to accommodate local fire-suppression codes. Overhead window panel made of .22-in. polycarbonate.

### FEATURES

---

Frame made of 16 gauge steel

Overhead window panel made of .22-inch polycarbonate

Sealed containment, Window Ceiling Panels have easily modified .22-in. polycarbonate panels to accommodate local firesuppression codes (sprinkler heads)

Tool-less Ceiling Panels are easy to install and remove for cleaning and provide above-the-cabinet access to cables, equipment and systems

Clear, transparent door and roof panels provide maximum light to aisleway

SPECIFICATIONS

**Color:** Jet Black  
**Material:** Mild Steel  
**Finish:** Powder Coated  
**Color Code:** RAL 9005

Table 1/1

Catalog Number	Article Number	Height	Width	Depth	Thickness	Aisle Width
PCP312	38766	5.63in	51.52in	11.69in	16ga	48in
PCP612	20768	5.63in	51.52in	23.5in	16ga	48in
PCP712	20771	5.63in	51.52in	27.44in	16ga	48in
PCP812	20772	5.63in	51.52in	31.38in	16ga	48in

WARNING

nVent products shall be installed and used only as indicated in nVent's product instruction sheets and training materials. Instruction sheets are available at [www.nvent.com](http://www.nvent.com) and from your nVent customer service representative. Improper installation, misuse, misapplication or other failure to completely follow nVent's instructions and warnings may cause product malfunction, property damage, serious bodily injury and death and/or void your warranty.



Our powerful portfolio of brands:  
**nVent.com CADDY ERICO HOFFMAN RAYCHEM SCHROFF**  
**TRACER**