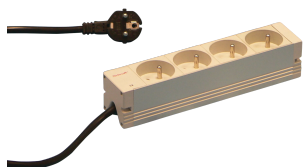


SOCKET STRIP, UTE



Modular, compact PDU with many function elements. Using a 1 U by 1 U aluminum chassis the PDU can easily be integrated in a rack with UTE outlets.

CERTIFICATIONS



FEATURES

230 V, 16 A

In accordance with NFC 61-303

Socket strip with UTE sockets

Mounting height 1 U

Horizontal or vertical mounting

Connecting cable 2 m, with SCHUKO/UTE plug

Socket strips can be rotated through all four directions (in 90° increments) during installation

SPECIFICATIONS

Table 1/2

Catalog Number	Product Type	Socket Type	Socket Quantity	Switched Outlets	Color	Voltage AC
60110-220	Socket Strip	UTE	4	No	Grey	230V
60110-221	Socket Strip	UTE	9	No	Grey	230V
60110-222	Socket Strip	UTE	12	No	Grey	230V

Catalog Number	ProductType	Socket Type	Socket Quantity	Switched Outlets	Color	Voltage AC
60110-223	Socket Strip	UTE	15	No	Grey	230V
60110-224	Socket Strip	UTE	19	No	Grey	230V
60110-225	Socket Strip	UTE	8	Yes	Grey	230V
60110-226	Socket Strip	UTE	12	Yes	Grey	230V
60110-227	Socket Strip	UTE	8	No	Grey	230V
60110-228	Socket Strip	UTE	6	No	Grey	230V
60110-229	Socket Strip	UTE	7	No	Grey	230V
60110-230	Socket Strip	UTE	6	No	Grey	230V
60110-231	Socket Strip	UTE	6	No	Grey	230V
60110-267	Socket Strip	UTE	6	No	Grey	230V

Table 2/2				
Catalog Number	Function	Finish	Material	Package Quantity
60110-220		Anodized	Aluminum, Polyamide	1
60110-221		Anodized	Aluminum, Polyamide	1
60110-222		Anodized	Aluminum, Polyamide	1
60110-223		Anodized	Aluminum, Polyamide	1
60110-224		Anodized	Aluminum, Polyamide	1
60110-225		Anodized	Aluminum, Polyamide	1
60110-226		Anodized	Aluminum, Polyamide	1
60110-227	Transient Protection	Anodized	Aluminum, Polyamide	1
60110-228	Overcurrent Protection	Anodized	Aluminum, Polyamide	1
60110-229	Mains Suppression Filter	Anodized	Aluminum, Polyamide	1
60110-230	Fault Current Protection	Anodized	Aluminum, Polyamide	1
60110-231	Fault Current Protection, Overcurrent Protection	Anodized	Aluminum, Polyamide	1
60110-267	Transient Protection, Mains Suppression Filter	Anodized	Aluminum, Polyamide	1

ADDITIONAL PRODUCT DETAILS

Please order bracket for vertical mounting separately.

WARNING

nVent products shall be installed and used only as indicated in nVent's product instruction sheets and training materials. Instruction sheets are available at www.nvent.com and from your nVent customer service representative. Improper installation, misuse, misapplication or other failure to completely follow nVent's instructions and warnings may cause product malfunction, property damage, serious bodily injury and death and/or void your warranty.



Our powerful portfolio of brands:
nVent.com CADDY ERICO HOFFMAN RAYCHEM SCHROFF
TRACER