

## NVENT ERIFLEX FLEXBUS HCBC PLATE WITH PE CONNECTION



### CERTIFICATIONS



### FEATURES

Rigid tinned copper part provides strong electrical contact to maintain braid expansion during compression

HCBC Plate allows Flexbus Conductor insulation to overlap the connection palm

HCBC Plate with PE connection allows conductor to be added to interconnect neutral and ground/earth

Tinned copper allows for copper or aluminum conductor connections

Installs quickly and easily

RoHS compliant

### SPECIFICATIONS

**Material:** Copper

**Finish:** Tinned

Table 1/2

Catalog Number	Article Number	E	Thickness (T)	Conductor Size	B	A
FLEXPLATE100 PE	508183	2.76in	0.2in	960 mm <sup>2</sup> , 1280 mm <sup>2</sup> , 1810 mm <sup>2</sup>	3.94in	4.53in

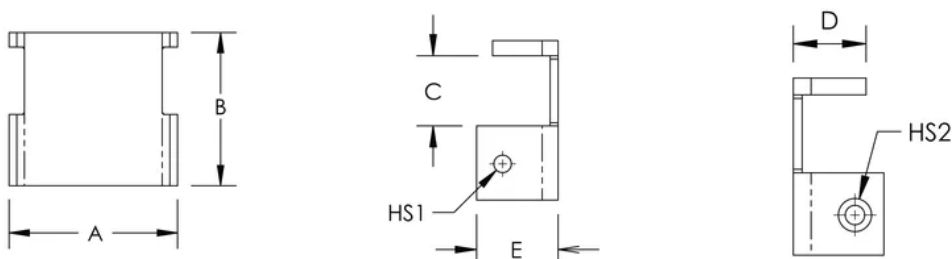
Catalog Number	Article Number	E	Thickness(T)	Conductor Size	B	A
FLEXPLATE50PE	508182	2.76in	0.2in	220 mm <sup>2</sup> , 360 mm <sup>2</sup> , 545 mm <sup>2</sup> , 640 mm <sup>2</sup>	3.94in	2.56in

Table 2/2						
Catalog Number	Article Number	Hole Size 2 (HS2)	Hole Size 1 (HS1)	Unit Weight	C	D
FLEXPLATE100PE	508183	0.73in	0.49in	1.57lb	1.77in	2.01in
FLEXPLATE50PE	508182	0.57in	0.41in	1.08lb	1.77in	1.61in

## ADDITIONAL PRODUCT DETAILS

It is mandatory to use the HCBC Clamp associated with the HCBC Plate for proper Flexbus Conductor connection.

## DIAGRAMS



## WARNING

nVent products shall be installed and used only as indicated in nVent's product instruction sheets and training materials. Instruction sheets are available at [www.nvent.com](http://www.nvent.com) and from your nVent customer service representative. Improper installation, misuse, misapplication or other failure to completely follow nVent's instructions and warnings may cause product malfunction, property damage, serious bodily injury and death and/or void your warranty.



Our powerful portfolio of brands:  
**nVent.com CADDY ERICO HOFFMAN RAYCHEM SCHROFF**  
**TRACER**