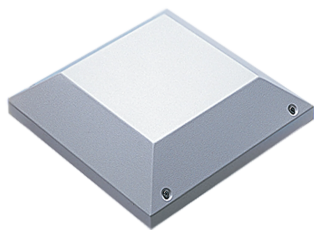


PROLINE ACCESSORY PAGOTA HIGH PERFORMANCE EXHAUST VENT WITH FAN

CATALOG NUMBER

PPTH1C



Vents fit on standard ProLine top with vent cutout or can be field-installed on any ProLine solid top. The Pagoda Vent features an integral centrifugal blower mounted in a housing that includes a drip-proof removable hood, wire mesh finger guard, perimeter gasket and terminal block. Electromagnetic-compatible (EMC) Pagoda Vents include a conductive screen, conductive gasket, line filter and 6-ft. power cord with stripped leads.

FEATURES

Integral centrifugal blower mounted in a protective housing

Can be installed on any ProLine or ProLine G2 solid top

Drip-protected, raised cover is removable from the inside of the enclosure

Housing includes a drip-proof removable hood, wire mesh finger guard and perimeter gasket

Lead wire or power cord options

115V or 230V versions

Rated UL Type 1; installing this component on an enclosure brings the enclosure rating to UL Type 1

Installation hardware included

PRODUCT ATTRIBUTES

Article Number: 11096

Material: Mild Steel

Voltage AC: 115V

Full Load: 1.7A

Use With: Top with high-performance pagoda vent cutout

Weight: 23lb

Color: Light Gray

Color Code: RAL 7035

Finish: Powder Coated

Thickness: 16ga

WARNING

nVent products shall be installed and used only as indicated in nVent's product instruction sheets and training materials. Instruction sheets are available at www.nvent.com and from your nVent customer service representative. Improper installation, misuse, misapplication or other failure to completely follow nVent's instructions and warnings may cause product malfunction, property damage, serious bodily injury and death and/or void your warranty.



Our powerful portfolio of brands:
nVent.com CADDY ERICO HOFFMAN RAYCHEM SCHROFF
TRACER