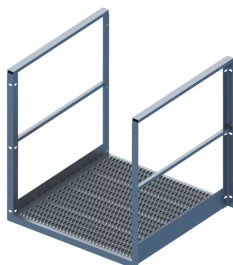




NVENT CADDY PYRAMID CROSSOVER BRIDGE



FEATURES

Standard bridge spans that can be combined to create custom pathway lengths

Interchangeable components are easily assembled yielding labor-saving and quick installations

Aluminum construction designed to withstand harsh environments

Walking surfaces with serrated tread provides maximum slip resistance and drainage

Compliant with OSHA, Cal/OSHA and ANSI® standards

SPECIFICATIONS

Material: Aluminum

Table 1/1

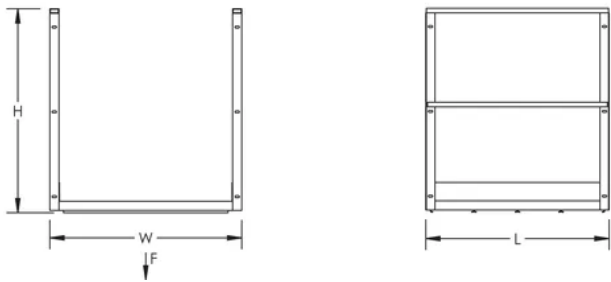
Catalog Number	Height (H)	Width (W)	Length (L)	Static Load (F)
PCB36X12	44"	42"	12"	500lb
PCB36	44"	42"	40"	500lb

ADDITIONAL PRODUCT DETAILS

Bridge spans require support on each end.

Bridge spans exceeding 90" require an additional support tower.

DIAGRAMS



WARNING

nVent products shall be installed and used only as indicated in nVent's product instruction sheets and training materials. Instruction sheets are available at www.nvent.com and from your nVent customer service representative. Improper installation, misuse, misapplication or other failure to completely follow nVent's instructions and warnings may cause product malfunction, property damage, serious bodily injury and death and/or void your warranty.

North America
+1.800.753.9221
Option 1 – Customer Care
Option 2 – Technical Support

Europe
Netherlands:
+31 800-0200135
France:
+33 800 901 793

Europe
Germany:
800 1890272
Other Countries:
+31 13 5835404

APAC
Shanghai:
+ 86 21 2412 1618/19
Sydney:
+61 2 9751 8500



Our powerful portfolio of brands:
nVent.com CADDY ERICO HOFFMAN RAYCHEM SCHROFF
TRACER