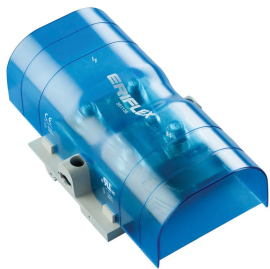


SBLL-800 LUG-TO-LUG POWER TERMINAL



CERTIFICATIONS



FEATURES

Tinned copper block allows for copper or aluminum conductor connections

Accessible studs allow for easy connection of sections of nVent ERIFLEX Flexibar or other conductors

Design allows for visual inspection of conductor and confirmation of connection

Adjustable transparent cover

Modular snap-together blocks for building multi-pole power blocks

Easily clips onto DIN rail or mounts to panel with screws

SBLEC Power Terminals Fixing Accessory required for direct panel mount

RoHS compliant

Halogen free

SPECIFICATIONS

Table 1/5

| Catalog Number | Article Number | Finish | Max Current Rating, IEC | Max Current Rating, UL/CSA | Short Circuit Current Rating (SCCR) | Peak Short Circuit Current (I _{pk}) |
|----------------|----------------|--------|-------------------------|----------------------------|-------------------------------------|---|
|----------------|----------------|--------|-------------------------|----------------------------|-------------------------------------|---|

| | | | | | | |
|----------|--------|--------|-------|------|-------|------|
| SBLL-800 | 561136 | Tinned | 1250A | 800A | 100kA | 75kA |
|----------|--------|--------|-------|------|-------|------|

Table 2/5

| Catalog Number | Article Number | Material | Number of Stud Connections | Stud Connection Conductor Width | Short Term Withstand Current (Icw) 1s | Stud Connection Wire Size |
|----------------|----------------|-----------------------|----------------------------|-----------------------------------|---------------------------------------|---------------------------|
| SBLL-800 | 561136 | Copper, Thermoplastic | 4 | (2) 20 – 40 mm, (1) 50 – 80 mm | 57.6kA | (2) #4 - 500 kcmil |

Table 3/5

| Catalog Number | Article Number | Stud Connection Compact Stranded Wire Size | Max Working Voltage, IEC (Ui) | Max Working Voltage, UL (Vin) | Height (H) | Width (W) |
|----------------|----------------|--|-------------------------------|-------------------------------|------------|-----------|
| SBLL-800 | 561136 | (2) 25 – 300 mm ² | 1000, 1500 | 1000 | 205.7mm | 115mm |

Table 4/5

| Catalog Number | Article Number | Depth (D) | A | Unit Weight | Flammability Rating | Certification Details |
|----------------|----------------|-----------|-------|-------------|---------------------|-----------------------|
| SBLL-800 | 561136 | 75mm | 108mm | 0.7kg | UL® 94V-1 | UL® 1059 |

Table 5/5

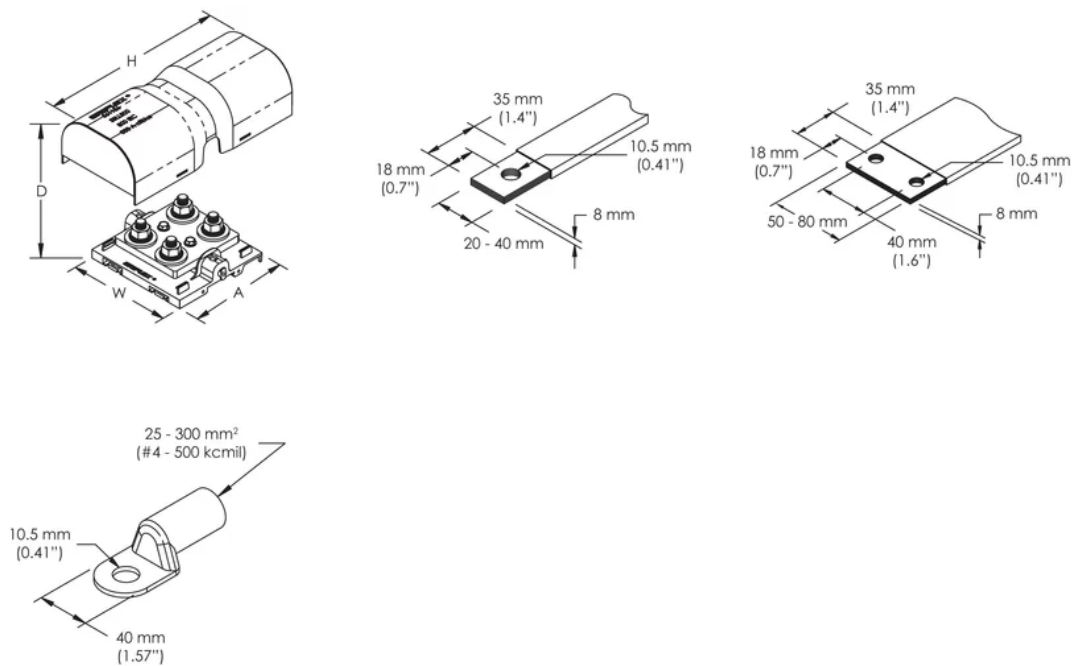
| Catalog Number | Article Number | Complies With |
|----------------|----------------|----------------|
| SBLL-800 | 561136 | IEC® 60947-7-1 |

ADDITIONAL PRODUCT DETAILS

Power terminal connections are interchangeable and can be used as line side or load side connections.

| Design Guideline for Distribution Blocks, Power Blocks and Power Terminals | | | | | | | | | | |
|---|-----|-----|-----|------|------|------|------|------|------|------|
| Derating according to Ambient* Temperature (°C) to maintain working temperature of 85°C | | | | | | | | | | |
| Ambient Temperature (°C) | 30° | 35° | 40° | 45° | 50° | 55° | 60° | 65° | 70° | 75° |
| Derating Coefficient (d) | 1 | 1 | 1 | 0.94 | 0.88 | 0.82 | 0.75 | 0.67 | 0.58 | 0.47 |
| *environment around the terminal blocks inside the enclosure | | | | | | | | | | |

DIAGRAMS



WARNING

nVent products shall be installed and used only as indicated in nVent's product instruction sheets and training materials. Instruction sheets are available at www.nvent.com and from your nVent customer service representative. Improper installation, misuse, misapplication or other failure to completely follow nVent's instructions and warnings may cause product malfunction, property damage, serious bodily injury and death and/or void your warranty.



Our powerful portfolio of brands:
nVent.com CADDY ERICO HOFFMAN RAYCHEM SCHROFF
TRACER