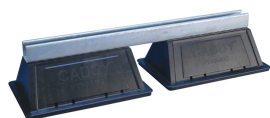




## NVENT CADDY PYRAMID ST BRIDGE ASSEMBLY



### FEATURES

Ideal for supporting multiple pipe runs, cable tray and air handling units

Foam bottom offers low abrasion interface for better roof membrane protection

Compatible with roof surfaces including single ply, bituminous, metal and spray foam

Provides superior load distribution, even with varying rooftop surfaces

Ready to use out of the box, saving installation time and labor

Multiple sizes and load ratings offer the ability to tailor the solution to the application

Hot-dip galvanized and UV stabilized for long lasting performance

### SPECIFICATIONS

**Static Load Safety Factor:** 3:1

**Finish:** Hot-Dip Galvanized

**Material:** Polyethylene;Polypropylene;Steel

**Temperature:** -45 to 65 °C

Table 1/2

Catalog Number	Article Number	Length 1 (L1)	Length 2 (L2)	Height (H)	Width (W)	Surface Area
PSB24A	360475	610 mm	673 mm	142 mm	203 mm	118709mm <sup>2</sup>
PSB42A	360478	1067 mm	1143 mm	142 mm	203 mm	183225mm <sup>2</sup>

Table 2/2

Catalog Number	Article Number	Unit Weight	Static Load (F)
----------------	----------------	-------------	-----------------

PSB24A	360475	2 kg	8900N
PSB42A	360478	4 kg	13340N

ADDITIONAL PRODUCT DETAILS

Static loads are assumed to be uniformly distributed.

DIAGRAMS



WARNING

nVent products shall be installed and used only as indicated in nVent's product instruction sheets and training materials. Instruction sheets are available at [www.nvent.com](http://www.nvent.com) and from your nVent customer service representative. Improper installation, misuse, misapplication or other failure to completely follow nVent's instructions and warnings may cause product malfunction, property damage, serious bodily injury and death and/or void your warranty.

**North America**  
+1.800.753.9221  
Option 1 – Customer Care  
Option 2 – Technical Support

**Europe**  
Netherlands:  
+31 800-0200135  
France:  
+33 800 901 793

**Europe**  
Germany:  
800 1890272  
Other Countries:  
+31 13 5835404

**APAC**  
Shanghai:  
+ 86 21 2412 1618/19  
Sydney:  
+61 2 9751 8500