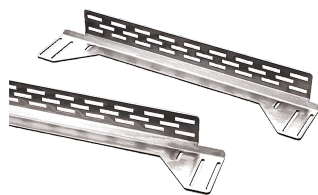


ADJUSTABLE RACK-MOUNTING RAILS, FITS 1200MM DEEP, BLACK, STEEL

CATALOG NUMBER

PBARA12B



Mounting rails allow rack angles to be positioned anywhere within the ProLine frame. The left-to-right adjustment pertains only when the enclosure is wider than the minimum width required for rack angles. Includes two right-hand and two left-hand mounting rails. Mounting hardware is included.

FEATURES

Furnished in set of four, two right-hand and two left-hand; mounting hardware included

Constructed of 12 gauge conductive steel; items ending in 'B' are RAL 9005 black

Rails mount depth-wise (front-to-back)

PRODUCT ATTRIBUTES

Article Number: 18796

Material: Mild Steel

Fits Frame Depth: 1200mm

Color: Jet Black

Color Code: RAL 9005

Finish: Powder Coated

Thickness: 2.66mm

WARNING

nVent products shall be installed and used only as indicated in nVent's product instruction sheets and training materials. Instruction sheets are available at www.nvent.com and from your nVent customer service representative. Improper installation, misuse, misapplication or other failure to completely follow nVent's instructions and warnings may cause product malfunction, property damage, serious bodily injury and death and/or void your warranty.



Our powerful portfolio of brands:
nVent.com CADDY ERICO HOFFMAN RAYCHEM SCHROFF
TRACER