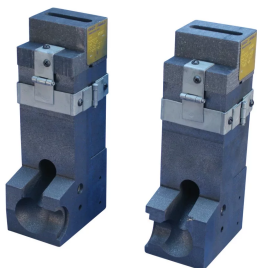


CABLE TO WEB OF RAIL MOLD PAIR, POWER, 85-141 LB T-RAIL, 4/0 CONCENTRIC

CATALOG NUMBER

PBW2Q



FEATURES

Replacement mold pair designed for the installation of track circuits and jumper bonds to the neutral axis

Sold in pairs

PRODUCT ATTRIBUTES

Material: Graphite

Rail Type: 85 lb to 141 lb T-Rail Sections

Bond Terminal Style: W

Conductor Size: 4/0 Concentric

Conductor Outer Diameter, Nominal: 13.41mm

Welder Style: T20

Mold Only: Yes

Welding Material: PB90, Sold Separately

Handle Clamp: C105C, Sold Separately

Conductor Sleeve: S01F, Sold Separately

Hammer Die: WD82, Sold Separately

WARNING

nVent products shall be installed and used only as indicated in nVent's product instruction sheets and training materials. Instruction sheets are available at www.nvent.com and from your nVent customer service representative. Improper installation, misuse, misapplication or other failure to completely follow nVent's instructions and warnings may cause product malfunction, property damage, serious bodily injury and death and/or void your warranty.



Our powerful portfolio of brands:
nVent.com CADDY ERICO HOFFMAN RAYCHEM SCHROFF
TRACER