

1 HOLE OFFSET LUG



FEATURES

Provides an efficient bolting surface for grounding and power applications

Electrolytic grade copper

For use with nVent ERICO Cadweld type LA connections only

SPECIFICATIONS

Finish: Tinned

Table 1/3

Catalog Number	Article Number	Material	Type	Height (H)	Width (W)	Thickness (T)
B101CEOL		Copper	NEMA®	15.88mm	25.4mm	3.18mm
KOF103	183200	Copper	Non-NEMA®	13mm	24.99mm	3mm
B101DEOL		Copper	NEMA®	17.53mm	25.4mm	4.76mm
B305SS		Stainless Steel 304 (EN 1.4301)	Non-NEMA®	20.07mm	29.97mm	5.08mm
B305TC		Copper	Non-NEMA®	20mm	30mm	5mm
B101EEOL		Copper	NEMA®	19.05mm	25.4mm	6.35mm

Table 2/3

Catalog Number	Article Number	Length (L)	C	B	A	Angle (a)
B101CEOL		63.5mm	22.23mm	25.4mm	12.7mm	45°

Catalog Number	Article Number	Length (L)	C	B	A	Angle (a)
KOF103	183200	55mm	25mm	20mm	10mm	45°
B101DEOL		68.33mm	22.23mm	28.58mm	14.3mm	45°
B305SS		91.44mm	39.88mm	33.78mm	15mm	45°
B305TC		91.4mm	39.88mm	33.78mm	15mm	45°
B101EEOL		76.2mm	26.92mm	32.54mm	15.9mm	45°

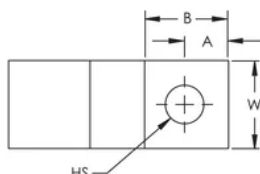
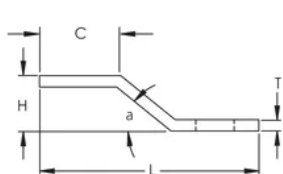
Table 3/3

Catalog Number	Article Number	Hole Size (HS)	Equivalent Conductor Size
B101CEOL		11.11mm	80.63mm ²
KOF103	183200	8.5mm	74.9mm ²
B101DEOL		14.29mm	120.94mm ²
B305SS		17mm	152.23mm ²
B305TC		17mm	152.23mm ²
B101EEOL		14.29mm	161.26mm ²

ADDITIONAL PRODUCT DETAILS

For sizes not listed, contact us.

DIAGRAMS



WARNING

nVent products shall be installed and used only as indicated in nVent's product instruction sheets and training materials. Instruction sheets are available at www.nvent.com and from your nVent customer service representative. Improper installation, misuse, misapplication or other failure to completely follow nVent's instructions and warnings may cause product malfunction, property damage, serious bodily injury and death and/or void your warranty.



Our powerful portfolio of brands:
nVent.com CADDY ERICO HOFFMAN RAYCHEM SCHROFF
TRACER