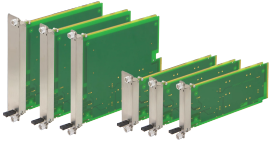


## AMC MODULE WITH PULL HANDLE, MTCA.4

AdvancedMC Front Panel including handle mechanism and EMC gasket for MTCA.1 and MTCA.4 Modules.



### CERTIFICATIONS



### FEATURES

- In accordance with PICMG MTCA.1 and MTCA.4 specifications
- AdvancedMC Module for MicroTCA.1 and MicroTCA.4 Chassis
- Latches and Retention Screw to fix the Module to the Card Cage
- Front panel, stainless steel

### SPECIFICATIONS

Table 1/1

Catalog Number	Works With	Material	Height	Package Quantity
21850-067	MicroTCA Systems	Stainless Steel	95mm	1
21850-068	MicroTCA Systems	Stainless Steel	95mm	1
21850-070	MicroTCA Systems	Stainless Steel	170mm	1
21850-071	MicroTCA Systems	Stainless Steel	170mm	1

### WARNING

nVent products shall be installed and used only as indicated in nVent's product instruction sheets and training materials. Instruction sheets are available at [www.nvent.com](http://www.nvent.com) and from your nVent customer service representative. Improper installation,

misuse, misapplication or other failure to completely follow nVent's instructions and warnings may cause product malfunction, property damage, serious bodily injury and death and/or void your warranty.

**North America**

All locations  
+1.763.422.2661  
Chat with us:  
[schroff.nvent.com](https://schroff.nvent.com)

**Europe**

Straubenhardt, Germany  
+49.7082.794.0  
Betschdorf, France  
+33.3.88.90.64.90  
Warsaw, Poland  
+48.22.209.98.35  
Assago, Italy  
+39.02.932.7141  
Chat with us:  
[schroff.nvent.com](https://schroff.nvent.com)

**Asia**

Shanghai, China  
+86.21.2412.6943  
Qingdao, China  
+86.532.8771.6101  
Singapore  
+65.6768.5800  
Shin-Yokohama, Japan  
+81.45.476.0271  
Chat with us:  
[schroff.nvent.com](https://schroff.nvent.com)

**Middle East & India**

Dubai, United Arab Emirates  
+971.4.378.1700  
Bangalore, India  
+91.80.6715.2001  
Istanbul, Turkey  
+90.216.250.7374  
Chat with us:  
[schroff.nvent.com](https://schroff.nvent.com)



Our powerful portfolio of brands:  
**nVent.com CADDY ERICO HOFFMAN RAYCHEM SCHROFF**  
**TRACER**