

## NVENT ERIFLEX FLEXBUS CONDUCTOR



nVent ERIFLEX Flexbus Conductor is ready-to-use from one side with direct connection to busbar or circuit-breaker palm. It is an innovative and patented connection solution between two pieces of electrical equipment (such as a transformer, switchboard or generator). Flexbus Advanced maintains a high level of reliability and creates an easy and customizable connection on-site without additional design study, specific specialized workforce or expensive tools. The Flexbus Conductor is insulated with a low-smoke, halogen-free, flame-retardant (LSHFFR), high-temperature and class II material. Flexbus Conductor is a flexible, copper-plated, aluminum flat braid with insulation available from 2 to 10 meters length and under different cross section for 500A to 4500A applications. It allows for connection from the power supply to switchgear with only one conductor per phase up to 1600kVA and with two conductors per phase up to 3150kVA.

### CERTIFICATIONS



### FEATURES

Flexible insulated copper-plated, aluminum flat braid

Better current/ampacity than cable due to skin effect

Much more flexible than cable

No bending radius to respect

Ready-to-use from one side with direct connection on busbar or circuit breaker palm

Only one conductor per phase from 400kVA (560 A) to 1600kVA (2250 A) and two conductors per phase for 2000kVA (2800 A) to 3150kVA (4435 A)

### SPECIFICATIONS

Table 1/6

| Catalog Number | Article Number | Connector Finish | Insulation Material | Mechanical Resistance Rating | Euroclass CPR | Nominal Voltage, IEC |
|----------------|----------------|------------------|---------------------|------------------------------|---------------|----------------------|
|----------------|----------------|------------------|---------------------|------------------------------|---------------|----------------------|

|                     |        |        |                            |      |                  |                         |
|---------------------|--------|--------|----------------------------|------|------------------|-------------------------|
| FLEXCOND1280<br>L10 | 508058 | Tinned | Thermoplastic<br>Elastomer | IK09 | Eca - s2, d2, a3 | 1,000 VAC,<br>1,500 VDC |
|---------------------|--------|--------|----------------------------|------|------------------|-------------------------|

| Table 2/6           |                |  |                                      |                                    |                       |         |
|---------------------|----------------|--|--------------------------------------|------------------------------------|-----------------------|---------|
| Catalog Number      | Article Number | UV Resistance Rating                     | Halogen Free Rating                  | Low Smoke Rating                   | Insulation Elongation | ΔT 60 K |
| FLEXCOND1280<br>L10 | 508058         | UL® 2556, UL® 854, IEC® 60364: AN3 Level | UL® 2885, IEC® 60754-1, IEC® 62821-2 | IEC® 61034-2, ISO 5659-2, UL® 2885 | 500 % Min             | 1,984 A |

| Table 3/6           |                |              |              |               |               |               |
|---------------------|----------------|--------------|--------------|---------------|---------------|---------------|
| Catalog Number      | Article Number | Width 2 (W2) | Width 1 (W1) | Height 1 (H1) | Height 2 (H2) | Length 2 (L2) |
| FLEXCOND1280<br>L10 | 508058         | 100 mm       | 108 mm       | 31.1 mm       | 18 mm         | 100 mm        |

| Table 4/6           |                |               |                     |                                      |  |                     |
|---------------------|----------------|---------------|---------------------|--------------------------------------|--|---------------------|
| Catalog Number      | Article Number | Length 1 (L1) | Dielectric Strength | 2 Bar Current Coefficient, Symmetric | 2 Bar Current Coefficient, Non-Symmetric | Working Temperature |
| FLEXCOND1280<br>L10 | 508058         | 10,000 mm     | 20 kV/mm            | 2                                    | 1.48                                     | -50 to 115 °C       |

| Table 5/6           |                |                      |               |       |       |       |
|---------------------|----------------|----------------------|---------------|-------|-------|-------|
| Catalog Number      | Article Number | Insulation Thickness | Wire Diameter | C     | D     | B     |
| FLEXCOND1280<br>L10 | 508058         | 2.5 – 3.5 mm         | 0.20 mm       | 25 mm | 25 mm | 50 mm |

| Table 6/6       |                |       |             |
|-----------------|----------------|-------|-------------|
| Catalog Number  | Article Number | A     | Unit Weight |
| FLEXCOND1280L10 | 508058         | 50 mm | 56.800 kg   |

**Installation  
Standard:**

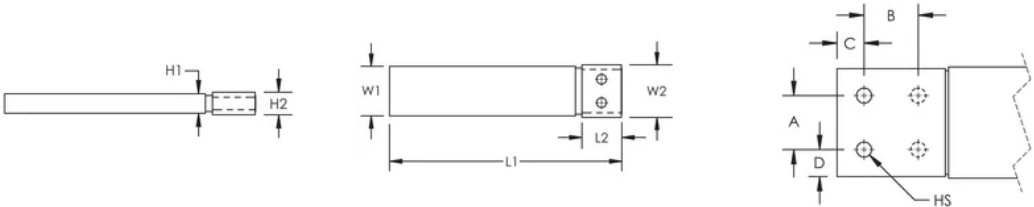
AS 3008;BS 7671;CEI 64-8;CSN;DIN VDE 0100;HD 384;IEC® 60364;NBR 5410;NEN 1010;NFC 15-100;NIBT-NIN;NP (2002);ÖNORM;REBT;RGIE-AREI

## ADDITIONAL PRODUCT DETAILS

Optional extender available for more connection possibilities.

| Current Coefficient According to Temperature Rise |                                |                                |                                |                                |                                |                                |                                |                                |
|---|--------------------------------|--------------------------------|--------------------------------|--------------------------------|--------------------------------|--------------------------------|--------------------------------|--------------------------------|
| Temperature Rise                                  | $\Delta T\ 30^{\circ}\text{C}$ | $\Delta T\ 40^{\circ}\text{C}$ | $\Delta T\ 45^{\circ}\text{C}$ | $\Delta T\ 50^{\circ}\text{C}$ | $\Delta T\ 55^{\circ}\text{C}$ | $\Delta T\ 60^{\circ}\text{C}$ | $\Delta T\ 65^{\circ}\text{C}$ | $\Delta T\ 70^{\circ}\text{C}$ |
| Derating Coefficient                              | 0.71                           | 0.82                           | 0.87                           | 0.91                           | 0.96                           | 1.00                           | 1.04                           | 1.08                           |

## DIAGRAMS



## WARNING

nVent products shall be installed and used only as indicated in nVent's product instruction sheets and training materials. Instruction sheets are available at [www.nvent.com](http://www.nvent.com) and from your nVent customer service representative. Improper installation, misuse, misapplication or other failure to completely follow nVent's instructions and warnings may cause product malfunction, property damage, serious bodily injury and death and/or void your warranty.



Our powerful portfolio of brands:  
**nVent.com CADDY ERICO HOFFMAN RAYCHEM SCHROFF**  
**TRACER**