

## GROUND POINT



### FEATURES

Cast grounding plate for equipment, machinery, or structure grounding points

May be installed flush in concrete floor or wall

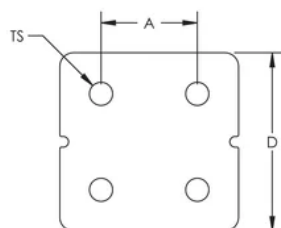
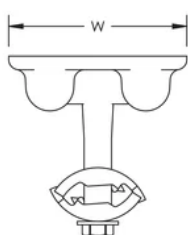
Cable connection under bolt tension

### SPECIFICATIONS

Table 1/1

Catalog Number	Conductor Size, UL	Thread Size (TS)	Width (W)	A	Unit Weight
LPC682	Class 1 - Class 2 (4/0 Max)	1/2" UNC	82.550 mm	44.45 mm	0.696 kg

### DIAGRAMS



## WARNING

---

nVent products shall be installed and used only as indicated in nVent's product instruction sheets and training materials. Instruction sheets are available at [www.nvent.com](http://www.nvent.com) and from your nVent customer service representative. Improper installation, misuse, misapplication or other failure to completely follow nVent's instructions and warnings may cause product malfunction, property damage, serious bodily injury and death and/or void your warranty.

⚠ WARNING: This product can expose you to chemicals including lead, which is known to the State of California to cause cancer and birth defects or other reproductive harm. For more information go to [www.P65Warnings.ca.gov](http://www.P65Warnings.ca.gov).



Our powerful portfolio of brands:  
**nVent.com CADDY ERICO HOFFMAN RAYCHEM SCHROFF**  
**TRACER**