



# NVENT CADDY ROD LOCK CHANNEL NUT



## CERTIFICATIONS



## FEATURES

- Provides fast universal attachment of threaded rod and hardware to standard strut profiles
- Can be used to prefabricate assemblies which can be quickly pushed onto previously installed threaded rods
- Works with slightly damaged threads and minor burrs on the threaded rod

## SPECIFICATIONS

- Material:** Cast Iron
- Finish:** Electrogalvanized

Table 1/2

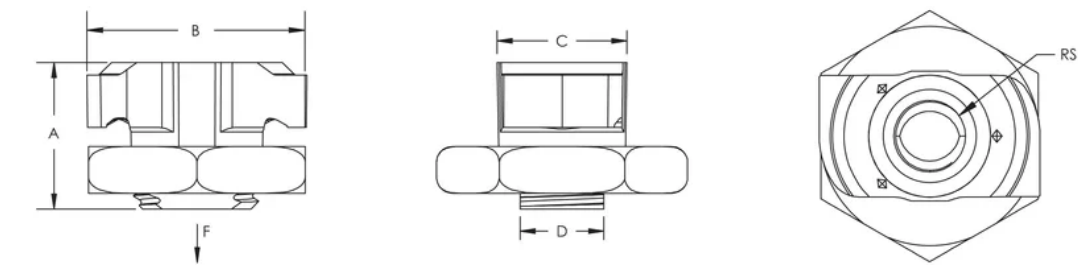
Catalog Number	Article Number	Rod Size (RS)	A	B	C	D
CRLSM10EG	390004	10	23 mm	35 mm	19.5 mm	13.5 mm
CRLSM8EG	390003	8	23 mm	35 mm	19.5 mm	13.5 mm

Table 2/2

Catalog Number	Article Number	Static Load (F)	Packing Quantity
----------------	----------------	-----------------	------------------

CRLSM10EG	390004	3750N	1.0000
CRLSM8EG	390003	2750N	1.0000

### DIAGRAMS



### WARNING

nVent products shall be installed and used only as indicated in nVent's product instruction sheets and training materials. Instruction sheets are available at [www.nvent.com](http://www.nvent.com) and from your nVent customer service representative. Improper installation, misuse, misapplication or other failure to completely follow nVent's instructions and warnings may cause product malfunction, property damage, serious bodily injury and death and/or void your warranty.

**North America**  
+1.800.753.9221  
Option 1 – Customer Care  
Option 2 – Technical Support

**Europe**  
Netherlands:  
+31 800-0200135  
France:  
+33 800 901 793

**Europe**  
Germany:  
800 1890272  
Other Countries:  
+31 13 5835404

**APAC**  
Shanghai:  
+ 86 21 2412 1618/19  
Sydney:  
+61 2 9751 8500