

FRONT PANEL, FLAT, REFROFIT SHIELDING, D-SUB CUTOUTS



Flat front panel with cutout for D-Sub connectors. Shieldable for stainless steel EMC gasket.

CERTIFICATIONS



FEATURES

For stainless steel EMC gasket

Al, 2.5 mm, front anodized, conductive

SPECIFICATIONS

Accessory Type: Front panel

Table 1/3

Catalog Number	Product Type	Type	EMC Shielding	EMC Gasket Type	Material	Rack Height
30118-348	Front Panel	Front Panel without Handle	No (Retrofittable)	Stainless Steel	Aluminum	3U

Catalog Number	ProductType	Type	EMC Shielding	EMC Gasket Type	Material	Rack Height
30118-349	Front Panel	Front Panel without Handle	No (Retrofittable)	Stainless Steel	Aluminum	3U
30118-350	Front Panel	Front Panel without Handle	No (Retrofittable)	Stainless Steel	Aluminum	3U
30118-351	Front Panel	Front Panel without Handle	No (Retrofittable)	Stainless Steel	Aluminum	3U
30118-352	Front Panel	Front Panel without Handle	No (Retrofittable)	Stainless Steel	Aluminum	3U
30118-353	Front Panel	Front Panel without Handle	No (Retrofittable)	Stainless Steel	Aluminum	3U
30118-354	Front Panel	Front Panel without Handle	No (Retrofittable)	Stainless Steel	Aluminum	3U

Table 2/3						
Catalog Number	Front Finish	Rear Finish	Height (H)	Treated Edges	Rack Width	Width (W)
30118-348	Anodized	Conductive	128.4mm	No	4HP	19.98mm
30118-349	Anodized	Conductive	128.4mm	No	4HP	19.98mm
30118-350	Anodized	Conductive	128.4mm	No	4HP	19.98mm
30118-351	Anodized	Conductive	128.4mm	No	4HP	19.98mm
30118-352	Anodized	Conductive	128.4mm	No	4HP	19.98mm
30118-353	Anodized	Conductive	128.4mm	No	4HP	19.98mm
30118-354	Anodized	Conductive	128.4mm	No	4HP	19.98mm

Table 3/3					
Catalog Number	Depth (D)	Mounting	Complies With	Package Quantity	Finish
30118-348	2.5mm	Screw-on Front	IEC 60297-3-101, IEEE 1101.1/10	1	Anodized, Passivated
30118-349	2.5mm	Screw-on Front	IEC 60297-3-101, IEEE 1101.1/10	1	Anodized, Passivated
30118-350	2.5mm	Screw-on Front	IEC 60297-3-101, IEEE 1101.1/10	1	Anodized, Passivated
30118-351	2.5mm	Screw-on Front	IEC 60297-3-101, IEEE 1101.1/10	1	Anodized, Passivated
30118-352	2.5mm	Screw-on Front	IEC 60297-3-101, IEEE 1101.1/10	1	Anodized, Passivated
30118-353	2.5mm	Screw-on Front	IEC 60297-3-101, IEEE 1101.1/10	1	Anodized, Passivated

CatalogNumber	Depth (D)	Mounting	Complies With	Package Quantity	Finish
30118-354	2.5mm	Screw-on Front	IEC 60297-3-101, IEEE 1101.1/10	1	Anodized, Passivated

ADDITIONAL PRODUCT DETAILS

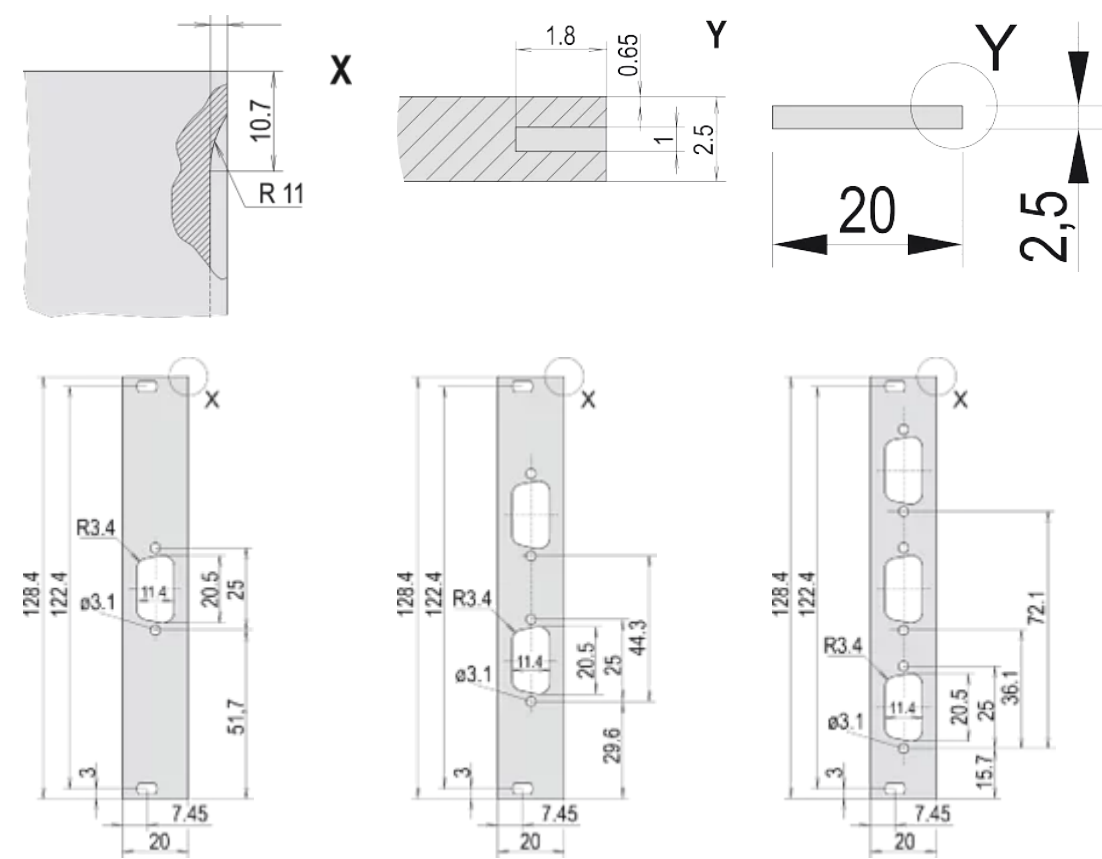
Please order fixing material (sleeves, collar screws) separately.

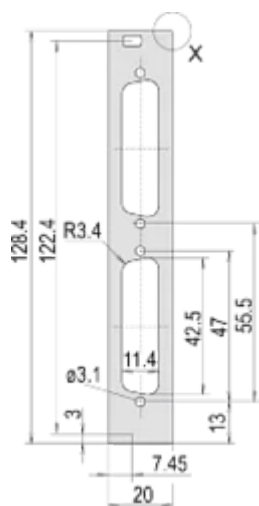
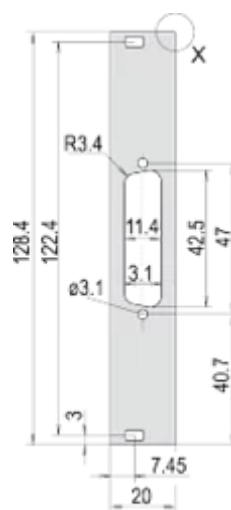
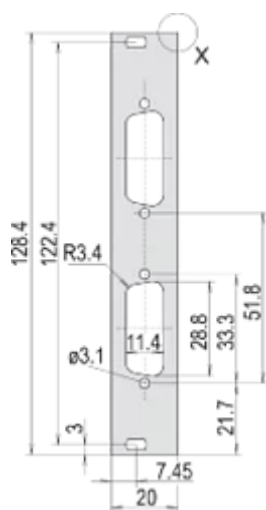
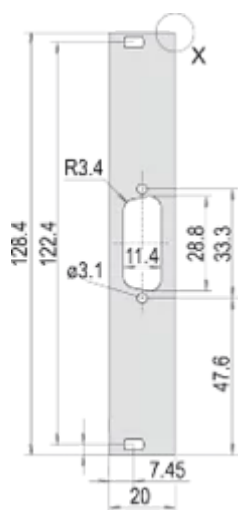
Delivery is in standard pack multiples. Pricing is per individual item.

Please order stainless steel EMC gasket separately.

Please take into consideration that deliveries may be carried out in the stated SPQs (SPQ, e.g. 5 pieces, 10 pieces, 50 pieces, etc.). Differing order quantities (e.g. 2 pieces) may be changed to the next possible delivery quantity = Standard Pack Quantity.

DIAGRAMS





WARNING

nVent products shall be installed and used only as indicated in nVent's product instruction sheets and training materials. Instruction sheets are available at www.nvent.com and from your nVent customer service representative. Improper installation, misuse, misapplication or other failure to completely follow nVent's instructions and warnings may cause product malfunction, property damage, serious bodily injury and death and/or void your warranty.

North America

All locations
+1.763.422.2661
Chat with us:
schroff.nvent.com

Europe

Straubenhardt, Germany
+49.7082.794.0
Betschdorf, France
+33.3.88.90.64.90
Warsaw, Poland
+48.22.209.98.35
Assago, Italy
+39.02.932.7141
Chat with us:
schroff.nvent.com

Asia

Shanghai, China
+86.21.2412.6943
Qingdao, China
+86.532.8771.6101
Singapore
+65.6768.5800
Shin-Yokohama, Japan
+81.45.476.0271
Chat with us:
schroff.nvent.com

Middle East & India

Dubai, United Arab Emirates
+971.4.378.1700
Bangalore, India
+91.80.6715.2001
Istanbul, Turkey
+90.216.250.7374
Chat with us:
schroff.nvent.com



Our powerful portfolio of brands:
nVent.com CADDY ERICO HOFFMAN RAYCHEM SCHROFF
TRACER