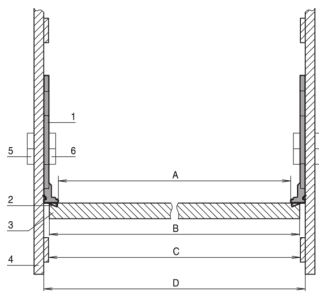


EUROPACPRO EMC SHIELDING KIT, BACKPLANE TO SIDE PANEL



Vertical profile enables the EMC contact between the side panel and the backplane. The assembly grid is 30 mm.

CERTIFICATIONS



FEATURES

For vertical contact the support profile may be fixed to the side panel of the subrack or case (depth grid 30 mm)

With some designs the backplane can be used as the shielding rear panel of the subrack; for this a rear horizontal rail (type L-VT or H-VT) for recessed installation is required to ensure horizontal contact

SPECIFICATIONS

Table 1/1

Catalog Number	Rack Height	Material	Package Quantity	Length
24561-199	3U	Stainless Steel, Aluminum	2	110mm
24561-499	6U	Stainless Steel, Aluminum	2	243.35mm

WARNING

nVent products shall be installed and used only as indicated in nVent's product instruction sheets and training materials. Instruction sheets are available at www.nvent.com and from your nVent customer service representative. Improper installation, misuse, misapplication or other failure to completely follow nVent's instructions and warnings may cause product malfunction, property damage, serious bodily injury and death and/or void your warranty.

North America

All locations

+1.763.422.2661

Chat with us:

schroff.nvent.com

Europe

Straubenhardt, Germany

+49.7082.794.0

Betschdorf, France

+33.3.88.90.64.90

Warsaw, Poland

+48.22.209.98.35

Assago, Italy

+39.02.932.7141

Chat with us:

schroff.nvent.com

Asia

Shanghai, China

+86.21.2412.6943

Qingdao, China

+86.532.8771.6101

Singapore

+65.6768.5800

Shin-Yokohama, Japan

+81.45.476.0271

Chat with us:

schroff.nvent.com

Middle East & India

Dubai, United Arab Emirates

+971.4.378.1700

Bangalore, India

+91.80.6715.2001

Istanbul, Turkey

+90.216.250.7374

Chat with us:

schroff.nvent.com



Our powerful portfolio of brands:
nVent.com CADDY ERICO HOFFMAN RAYCHEM SCHROFF
TRACER