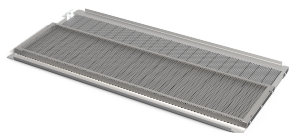


## EUROPACPRO ADVANCED EMC PLUS, DUAL MESH TOP AND BOTTOM COVERS, SCREWED TO SIDE PANEL

NEW PRODUCT



A cover plate is used for electromagnetic shielding and as mechanical protection. The cover can be screwed onto the side panel.

### FEATURES

Dual mesh top and bottom covers with EMC and airflow optimized perforation, for highest RF-shielding requirements

Fulfills the requirements of the fire safety standard EN 62368-1

For PCBs with standard formats

Cover plate for bolting to the side panel

Suitable for use with all horizontal rails, besides Rugged

### SPECIFICATIONS

Table 1/2

Catalog Number	Type	Rack Width	Depth	Package Quantity	Material	Board Depth
24563-770	Perforated	84HP	175mm	2	Aluminum	160mm
24563-771	Perforated	84HP	235mm	2	Aluminum	160mm
24563-772	Perforated	84HP	275mm	2	Aluminum	160mm
24563-773	Perforated	84HP	277.75mm	2	Aluminum	160mm
24563-774	Perforated	84HP	295mm	2	Aluminum	160mm
24563-775	Perforated	84HP	355mm	2	Aluminum	160mm
24563-776	Perforated	84HP	415mm	2	Aluminum	160mm
24563-777	Perforated	84HP	475mm	2	Aluminum	160mm
24563-780	Perforated	84HP	235mm	2	Aluminum	220mm
24563-781	Perforated	84HP	295mm	2	Aluminum	220mm

Catalog Number	Type	Rack Width	Depth	Package Quantity	Material	Board Depth
24563-782	Perforated	84HP	355mm	2	Aluminum	220mm
24563-783	Perforated	84HP	415mm	2	Aluminum	220mm
24563-784	Perforated	84HP	475mm	2	Aluminum	220mm
24563-790	Perforated	84HP	295mm	2	Aluminum	280mm
24563-791	Perforated	84HP	355mm	2	Aluminum	280mm
24563-792	Perforated	84HP	415mm	2	Aluminum	280mm
24563-793	Perforated	84HP	475mm	2	Aluminum	280mm

Table 2/2		
Catalog Number	Finish	Package Unit
24563-770	Passivated	Pair
24563-771	Passivated	Pair
24563-772	Passivated	Pair
24563-773	Passivated	Pair
24563-774	Passivated	Pair
24563-775	Passivated	Pair
24563-776	Passivated	Pair
24563-777	Passivated	Pair
24563-780	Passivated	Pair
24563-781	Passivated	Pair
24563-782	Passivated	Pair
24563-783	Passivated	Pair
24563-784	Passivated	Pair
24563-790	Passivated	Pair
24563-791	Passivated	Pair
24563-792	Passivated	Pair
24563-793	Passivated	Pair

## WARNING

nVent products shall be installed and used only as indicated in nVent's product instruction sheets and training materials. Instruction sheets are available at [www.nvent.com](http://www.nvent.com) and from your nVent customer service representative. Improper installation, misuse, misapplication or other failure to completely follow nVent's instructions and warnings may cause product malfunction, property damage, serious bodily injury and death and/or void your warranty.

#### North America

All locations

+1.763.422.2661

Chat with us:

[schroff.nvent.com](https://schroff.nvent.com)

#### Europe

Straubenhardt, Germany

+49.7082.794.0

Betschdorf, France

+33.3.88.90.64.90

Warsaw, Poland

+48.22.209.98.35

Assago, Italy

+39.02.932.7141

Chat with us:

[schroff.nvent.com](https://schroff.nvent.com)

#### Asia

Shanghai, China

+86.21.2412.6943

Qingdao, China

+86.532.8771.6101

Singapore

+65.6768.5800

Shin-Yokohama, Japan

+81.45.476.0271

Chat with us:

[schroff.nvent.com](https://schroff.nvent.com)

#### Middle East & India

Dubai, United Arab Emirates

+971.4.378.1700

Bangalore, India

+91.80.6715.2001

Istanbul, Turkey

+90.216.250.7374

Chat with us:

[schroff.nvent.com](https://schroff.nvent.com)



Our powerful portfolio of brands:  
**nVent.com CADDY ERICO HOFFMAN RAYCHEM SCHROFF**  
**TRACER**