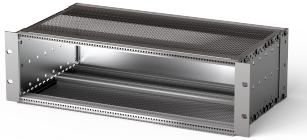


## EUROPACPRO 19" SUBRACK KIT FOR BACKPLANE, SHIELDED, COMPACTPCI

EMC Shielded subrack for backplane mounting, for CPCI application.



### CERTIFICATIONS



### FEATURES

Subrack with side panel type F ("flexible") for CompactPCI plug-in units with high insertion and withdrawal forces

Aluminum construction

Rear horizontal rail for backplane mounting with insulation strip

Internal and external dimensions in accordance with: IEC 60297-3-100, -101, -102, -103, -104, IEEE 1101.1, IEEE 1101.10/11

Modifications such as cutouts, different finishes or dimensions available

EMC of approximately 40 dB at 1 GHz, 30 dB at 2 GHz, assuming that the front is covered with shielded front panels, testing in accordance with VG 95373 part 15

Supplied as space-saving flat-pack

IP 20, in accordance with IEC 60529

Horizontal rail type "Heavy"

### SPECIFICATIONS

Table 1/3

Catalog Number	Rack Height	Rack Width	Depth (D)	For Mounting	Board Depth	EMC Shielding
24563-152	3U	84HP	235mm	Backplane	160mm	Yes

Catalog Number	Rack Height	Rack Width	Depth (D)	ForMounting	Board Depth	EMC Shielding
24563-157	3U	84HP	275mm	Backplane	80mm, 160mm	Yes
24563-452	6U	84HP	235mm	Backplane	160mm	Yes
24563-457	6U	84HP	275mm	Backplane	80mm, 160mm	Yes

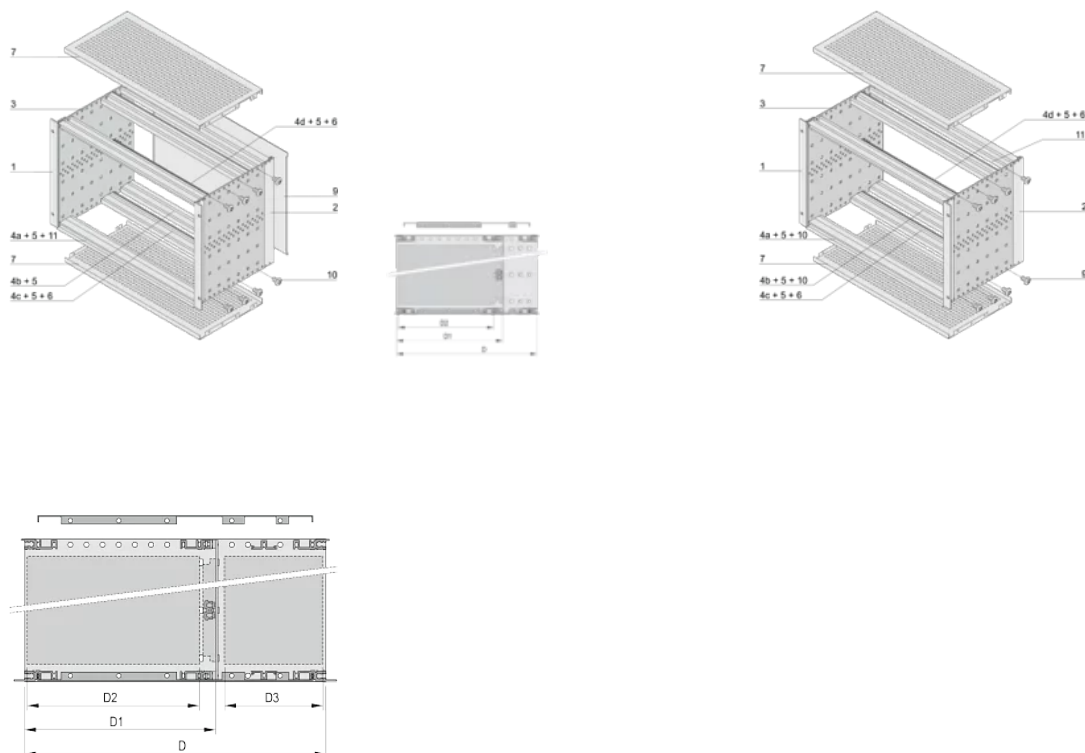
Table 2/3						
Catalog Number	EMC Gasket Type	Static Load	Handle Included	Mounting	Complies With	Package Quantity
24563-152	Textile	11kgf	No	Rack	IEC 60297-3-103, IEEE 1101.10	1
24563-157	Textile	11kgf	No	Rack	IEC 60297-3-103, IEEE 1101.10, IEEE 1101.11	1
24563-452	Textile	11kgf	No	Rack	IEC 60297-3-103, IEEE 1101.10	1
24563-457	Textile	11kgf	No	Rack	IEC 60297-3-103, IEEE 1101.10, IEEE 1101.11	1

Table 3/3			
Catalog Number	Rear I/O	Finish	Material
24563-152		Anodized, Passivated	Aluminum
24563-157	Yes	Anodized, Passivated	Aluminum
24563-452		Anodized, Passivated	Aluminum
24563-457	Yes	Anodized, Passivated	Aluminum

## ADDITIONAL PRODUCT DETAILS

Individual configuration: broad range of variants in height, width and depth; guide rails for a wide variety of applications; interior options; accessories and mounting material.

## DIAGRAMS



## WARNING

nVent products shall be installed and used only as indicated in nVent's product instruction sheets and training materials. Instruction sheets are available at [www.nvent.com](http://www.nvent.com) and from your nVent customer service representative. Improper installation, misuse, misapplication or other failure to completely follow nVent's instructions and warnings may cause product malfunction, property damage, serious bodily injury and death and/or void your warranty.

### North America

All locations  
+1.763.422.2661  
Chat with us:  
[schroff.nvent.com](http://schroff.nvent.com)

### Europe

Straubenhardt, Germany  
+49.7082.794.0  
Betschdorf, France  
+33.3.88.90.64.90  
Warsaw, Poland  
+48.22.209.98.35  
Assago, Italy  
+39.02.932.7141  
Chat with us:  
[schroff.nvent.com](http://schroff.nvent.com)

### Asia

Shanghai, China  
+86.21.2412.6943  
Qingdao, China  
+86.532.8771.6101  
Singapore  
+65.6768.5800  
Shin-Yokohama, Japan  
+81.45.476.0271  
Chat with us:  
[schroff.nvent.com](http://schroff.nvent.com)

### Middle East & India

Dubai, United Arab Emirates  
+971.4.378.1700  
Bangalore, India  
+91.80.6715.2001  
Istanbul, Turkey  
+90.216.250.7374  
Chat with us:  
[schroff.nvent.com](http://schroff.nvent.com)



Our powerful portfolio of brands:  
**nVent.com CADDY ERICO HOFFMAN RAYCHEM SCHROFF**  
**TRACER**