

C2SW SIDE WELDABLE HALF-COUPLER, OFFSET FLAT, 50 MM

CATALOG NUMBER

EL50TC2SWN



FEATURES

Designed for connecting reinforcing bar parallel to structural steel sections or plates

Machined from weldable grades of steel

PRODUCT ATTRIBUTES

Material: Steel

Finish: Plain

Rebar Size, Metric: 50 mm

Diameter (Ø): 90 mm

Length (L): 120 mm

Height 1 (H1): 77mm

Height 2 (H2): 40mm

Bar Depth (BD): 71mm

Unit Weight: 4.22 kg

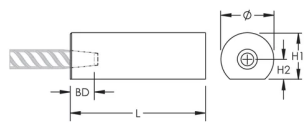
Designed to Meet: AASHTO;ABNT NBR 8548:1984;ACI 318 Type 1 (125% Specified Yield);ACI 318 Type 2 (Specified Tensile);ACI 349;ACI 359;AS3600

ADDITIONAL PRODUCT DETAILS

Bar dimensions and weights listed may vary by region. Coupler sizes not shown may be available by special order. Contact your nVent LENTON representative for more information.

The design of the weld, the selection of electrode, and other relevant choices depend on the chemical and physical properties of the structural steel to which the couplers are welded. Engineers who design assemblies should adhere to all appropriate regulations.

DIAGRAMS



WARNING

nVent products shall be installed and used only as indicated in nVent's product instruction sheets and training materials. Instruction sheets are available at www.nvent.com and from your nVent customer service representative. Improper installation, misuse, misapplication or other failure to completely follow nVent's instructions and warnings may cause product malfunction, property damage, serious bodily injury and death and/or void your warranty.

North America +1.800.753.9221 Option 1 – Customer Care Option 2 – Technical Support	Europe Netherlands: +31 800-0200135 France: +33 800 901 793	Europe Germany: 800 1890272 Other Countries: +31 13 5835404	APAC Shanghai: + 86 21 2412 1618/19 Sydney: +61 2 9751 8500
---	--	--	--