

ONE-PIECE FLANGE COUPLER, 36 MM, #11, 35M

CATALOG NUMBER

EL36SANSPO04



One-piece flange couplers are ideal for eliminating protruding dowel bars in segmental pour applications. The flange side of the coupler is typically tack or seal welded to cast-in-place structural steel walls commonly found in most modern nuclear reactor designs.

FEATURES

Designed to splice the same diameter bars where the second bar can be rotated and is not restricted in its axial direction

Tack welding allows the coupler to be used for positioning of a bent bar on the first bar

Installs quickly and easily

PRODUCT ATTRIBUTES

Material: Steel

Finish: Plain

Rebar Size, Metric: 36 mm

Rebar Size, US: #11

Rebar Size, Canada: 35M

Diameter 1 (Ø1): 60 mm

Diameter 2 (Ø2): 48 mm

Length 1 (L1): 101 mm

Length 2 (L2): 85 mm

Bar Depth (BD): 43mm

Bar Gap (BG): 16

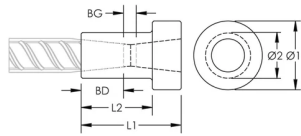
Unit Weight: 0.91 kg

Designed to Meet: AASHTO;ABNT NBR 8548:1984;ACI 318 Type 1 (125% Specified Yield);ACI 318 Type 2 (Specified Tensile);ACI 349;ACI 359;AS3600

ADDITIONAL PRODUCT DETAILS

Bar dimensions and weights listed may vary by region. Coupler sizes not shown may be available by special order. Contact your nVent LENTON representative for more information.

DIAGRAMS



WARNING

nVent products shall be installed and used only as indicated in nVent's product instruction sheets and training materials. Instruction sheets are available at www.nvent.com and from your nVent customer service representative. Improper installation, misuse, misapplication or other failure to completely follow nVent's instructions and warnings may cause product malfunction, property damage, serious bodily injury and death and/or void your warranty.

North America
+1.800.753.9221
Option 1 – Customer Care
Option 2 – Technical Support

Europe
Netherlands:
+31 800-0200135
France:
+33 800 901 793

Europe
Germany:
800 1890272
Other Countries:
+31 13 5835404

APAC
Shanghai:
+ 86 21 2412 1618/19
Sydney:
+61 2 9751 8500



Our powerful portfolio of brands:
nVent.com CADDY ERICO HOFFMAN RAYCHEM SCHROFF
TRACER