

A2 STANDARD COUPLER, COATED, HD, 20 MM, #6, 20M

CATALOG NUMBER

EL20A2NGV



Coated reinforcing bar is used in place of plain reinforcing bars to protect against corrosion. Typical applications include bridges, parking structures, pavement, marine structures and repair work. nVent LENTON couplers and mechanical anchors are available in multiple coatings to meet specific job requirements.

CERTIFICATIONS



FEATURES

Designed to splice the same diameter bars where the second bar can be rotated and is not restricted in its axial direction

Slim design maintains concrete cover

Installs quickly and easily

Multiple coatings available

PRODUCT ATTRIBUTES

Material: Steel

Finish: Hot-Dip Galvanized

Finish Standard: ASTM® A767 Class I

Coupler Protector: Standard

Rebar Size, Metric: 20 mm

Rebar Size, US: #6

Rebar Size, Canada: 20M

Hex Width (W): 27 mm

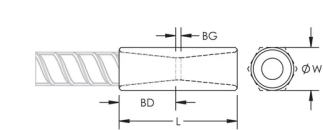
Length (L): 72 mm

Bar Depth (BD): 28mm
Bar Gap (BG): 16
Unit Weight: 0.24 kg
Designed to Meet: AASHTO;ABNT NBR 8548:1984;ACI 318 Type 1 (125% Specified Yield);ACI 318 Type 2 (Specified Tensile);ACI 349;ACI 359;AS3600

ADDITIONAL PRODUCT DETAILS

Bar dimensions and weights listed may vary by region. Coupler sizes not shown may be available by special order. Contact your nVent LENTON representative for more information.

DIAGRAMS



WARNING

nVent products shall be installed and used only as indicated in nVent's product instruction sheets and training materials. Instruction sheets are available at www.nvent.com and from your nVent customer service representative. Improper installation, misuse, misapplication or other failure to completely follow nVent's instructions and warnings may cause product malfunction, property damage, serious bodily injury and death and/or void your warranty.

North America +1.800.753.9221 Option 1 – Customer Care Option 2 – Technical Support	Europe Netherlands: +31 800-0200135 France: +33 800 901 793	Europe Germany: 800 1890272 Other Countries: +31 13 5835404	APAC Shanghai: + 86 21 2412 1618/19 Sydney: +61 2 9751 8500
---	--	--	--