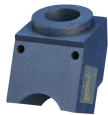


ANGULAR POURING BASIN, TOP FILL, 15°



Top fill pouring basins should be used on angular installations whenever the clearances of the structure allow. The compact size of the top fill pouring basins help ensure the best possible flow of filler material.

FEATURES

- Made from heat-resistant graphite
- Durable, re-usable and long lasting
- Designed for use with T-Series and B-Series horizontal top fill sleeves

SPECIFICATIONS

Material: Graphite

Table 1/1

| Catalog Number | Diameter (Ø) | Length (L) | Width (W) | Height (H) | Angle (a) |
|----------------|--------------|------------|-----------|------------|-----------|
| RBWS2222E | 57 mm | 89 mm | 89 mm | 133 mm | 15 ° |
| RBWS2222F | 64 mm | 89 mm | 89 mm | 133 mm | 15 ° |
| RBWS2222M | 95 mm | 89 mm | 89 mm | 133 mm | 15 ° |

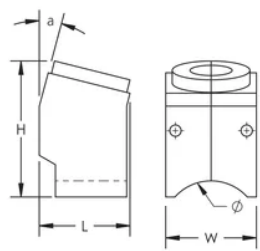
ADDITIONAL PRODUCT DETAILS

RBWS2222 pouring basins require one RBW167 pouring basin frame (sold separately).

Prior to installation, please read and understand all of the detailed instructions and safety notices provided in the nVent LENTON Cadweld Rebar Splicing System Instruction Manual.

Sizes not shown may be available by special order. Contact your nVent LENTON representative for more information.

DIAGRAMS



WARNING

nVent products shall be installed and used only as indicated in nVent's product instruction sheets and training materials. Instruction sheets are available at www.nvent.com and from your nVent customer service representative. Improper installation, misuse, misapplication or other failure to completely follow nVent's instructions and warnings may cause product malfunction, property damage, serious bodily injury and death and/or void your warranty.

North America

+1.800.753.9221
Option 1 – Customer Care
Option 2 – Technical Support

Europe

Netherlands:
+31 800-0200135
France:
+33 800 901 793

Europe

Germany:
800 1890272
Other Countries:
+31 13 5835404

APAC

Shanghai:
+ 86 21 2412 1618/19
Sydney:
+61 2 9751 8500



Our powerful portfolio of brands:
nVent.com CADDY ERICO HOFFMAN RAYCHEM SCHROFF
TRACER