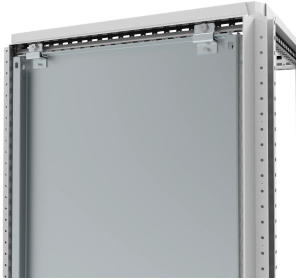


MOUNTING PLATE BRACKETS FOR REAR MOUNTING, MPA-R



This mounting plate fixation kit allows for mounting of a mounting plate from the rear. It can be positioned flush with the enclosure frame or set back behind the enclosure frame with an extra of +20 mm, increasing the useful depth of the enclosure.

FEATURES

Description: To fix mounting plates to the enclosure from rear. The kit includes brackets for fixing the mounting plate flush with the enclosure frame or set back behind the enclosure frame, adding +20mm of useful depth for mounting components. These brackets are needed when rear fixation is required or when the enclosure is ordered without the mounting plate (PE) as an alternative to MPA06/MPA04. Unmounting from both the front and rear is possible.

Material: 3 mm zinc plated steel.

Pack quantity: 2 top brackets, 2 bottom brackets, 2 brackets for flushing the mounting plate with the frame and 2 brackets for setting the mounting plate back behind the frame with mounting accessories.

SPECIFICATIONS

| Table 1/1 | | | | | | |
|----------------|----------------|--------|-------|-------|--------------------|----------------|
| Catalog Number | Article Number | Height | Width | Depth | Enclosure Material | Product Family |
| MPA04R | MPA04R | 50mm | 50mm | 38mm | Mild Steel | Free-Standing |

WARNING

nVent products shall be installed and used only as indicated in nVent's product instruction sheets and training materials. Instruction sheets are available at www.nvent.com and from your nVent customer service representative. Improper installation, misuse, misapplication or other failure to completely follow nVent's instructions and warnings may cause product malfunction, property damage, serious bodily injury and death and/or void your warranty.