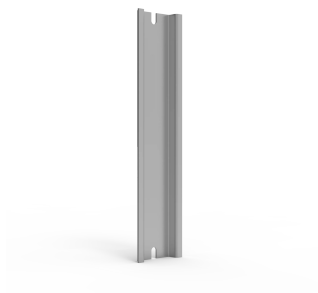


DIN RAIL, DR2



A ready to use DIN rail that facilitates both procurement and installation.

FEATURES

Description: DIN rail 35 mm for SABP boxes.

Material: Galvanized steel.

Pack quantity: 1 piece.

Ready to use rails ensure that both procurement and installation can be done efficiently reducing the labour time required

Note: DR2 can be mounted in both directions.

SPECIFICATIONS

Finish: Galvanized
Material: Galvanized Steel

Table 1/1					
Catalog Number	Height	Width	Enclosure Material	Product Family	Quick Ship
DR350404E	75mm	75mm	ABS	Terminal Boxes	No
DR350904E	125mm	125mm	ABS	Terminal Boxes	No
DR351404E	175mm	175mm	ABS	Terminal Boxes	No
DR352154E	250mm	250mm	ABS	Terminal Boxes	No

WARNING

nVent products shall be installed and used only as indicated in nVent's product instruction sheets and training materials. Instruction sheets are available at www.nvent.com and from your nVent customer service representative. Improper installation, misuse, misapplication or other failure to completely follow nVent's instructions and warnings may cause product malfunction, property damage, serious bodily injury and death and/or void your warranty.



Our powerful portfolio of brands:
nVent.com CADDY ERICO HOFFMAN RAYCHEM SCHROFF
TRACER