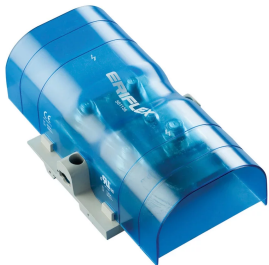


SBLL-800 LUG-TO-LUG POWER TERMINAL



CERTIFICATIONS



FEATURES

- Tinned copper block allows for copper or aluminum conductor connections
- Accessible studs allow for easy connection of sections of nVent ERIFLEX Flexibar or other conductors
- Design allows for visual inspection of conductor and confirmation of connection
- Adjustable transparent cover
- Modular snap-together blocks for building multi-pole power blocks
- Easily clips onto DIN rail or mounts to panel with screws
- SBLEC Power Terminals Fixing Accessory required for direct panel mount
- RoHS compliant
- Halogen free

SPECIFICATIONS

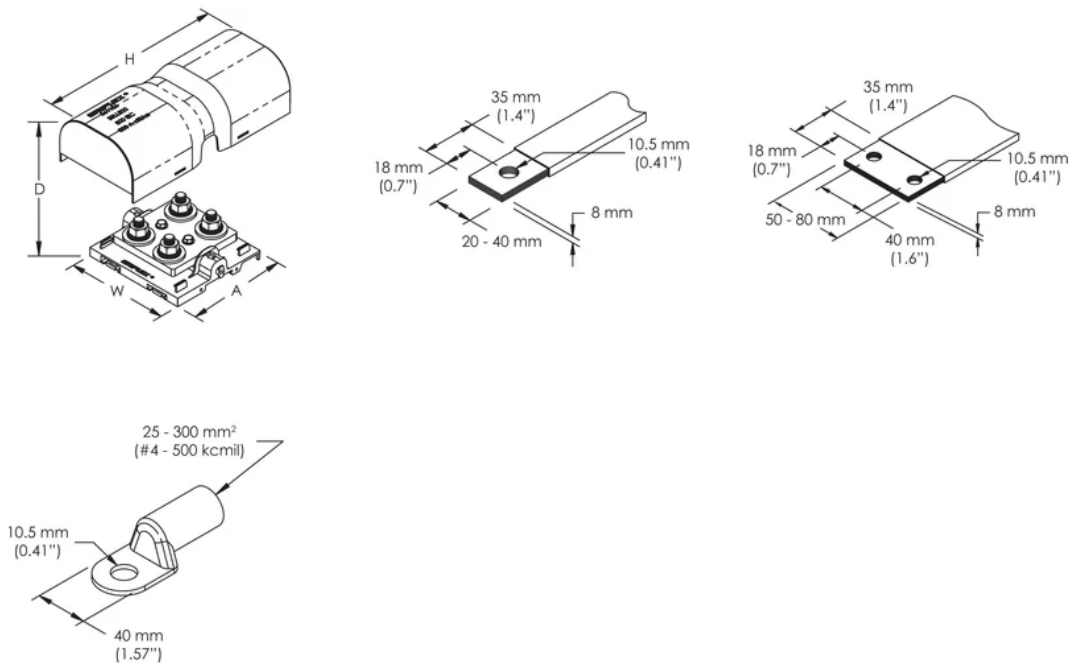
| Catalog Number | SBLL-800 |
|-------------------------|-------------------------|
| Article Number | 561136 |
| Material | Copper Thermoplastic |
| Finish | Tinned |
| Max Current Rating, IEC | 1250A |

| Catalog Number | SBLL-800 |
|----------------------------------------------------|----------------------------------|
| Max Current Rating, UL/CSA | 800A |
| Short Term Withstand Current (I _{cw}) 1s | 57.6kA |
| Peak Short Circuit Current (I _{pk}) | 75kA |
| Short Circuit Current Rating (SCCR) | 100kA |
| Max Working Voltage, IEC (U _i) | 1000 1500 |
| Max Working Voltage, UL (V _{in}) | 1000 |
| Number of Stud Connections | 4 |
| Stud Connection Conductor Width | (2) 20 – 40 mm (1) 50 – 80 mm |
| Stud Connection Compact Stranded Wire Size | (2) 25 – 300 mm ² |
| Stud Connection Wire Size | (2) #4 - 500 kcmil |
| Depth (D) | 75mm |
| Height (H) | 205.7 mm |
| Width (W) | 115 mm |
| A | 108 mm |
| Unit Weight | 0.7 kg |
| Certification Details | UL® 1059 |
| Flammability Rating | UL® 94V-1 |
| Complies With | IEC® 60947-7-1 |

ADDITIONAL PRODUCT DETAILS

Power terminal connections are interchangeable and can be used as line side or load side connections.

| Design Guideline for Distribution Blocks, Power Blocks and Power Terminals | | | | | | | | | | |
|-----------------------------------------------------------------------------------------|-----|-----|-----|------|------|------|------|------|------|------|
| Derating according to Ambient* Temperature (°C) to maintain working temperature of 85°C | | | | | | | | | | |
| Ambient Temperature (°C) | 30° | 35° | 40° | 45° | 50° | 55° | 60° | 65° | 70° | 75° |
| Derating Coefficient (d) | 1 | 1 | 1 | 0.94 | 0.88 | 0.82 | 0.75 | 0.67 | 0.58 | 0.47 |
| *environment around the terminal blocks inside the enclosure | | | | | | | | | | |



WARNING

nVent products shall be installed and used only as indicated in nVent's product instruction sheets and training materials. Instruction sheets are available at www.nvent.com and from your nVent customer service representative. Improper installation, misuse, misapplication or other failure to completely follow nVent's instructions and warnings may cause product malfunction, property damage, serious bodily injury and death and/or void your warranty.

North America
+1.800.753.9221
Option 1 – Customer Care
Option 2 – Technical Support

Europe
Netherlands:
+31 800-0200135
France:
+33 800 901 793

Europe
Germany:
800 1890272
Other Countries:
+31 13 5835404

APAC
Shanghai:
+ 86 21 2412 1618/19
Sydney:
+61 2 9751 8500