

NVENT ERIFLEX FLEXBUS HCBC PLATE



CERTIFICATIONS



FEATURES

- Rigid tinned copper part provides strong electrical contact to maintain braid expansion during compression
- HCBC Plate allows Flexbus Conductor insulation to overlap the connection palm
- Tinned copper allows for copper or aluminum conductor connections
- Installs quickly and easily
- RoHS compliant

SPECIFICATIONS

- Material:** Copper
- Finish:** Tinned

Table 1/2						
Catalog Number	Article Number	A	B	C	D	Thickness (T)
FLEXPLATE50	508180	65 mm	63 mm	45 mm	41 mm	5 mm
FLEXPLATE100	508181	115 mm	63 mm	45 mm	51 mm	5 mm

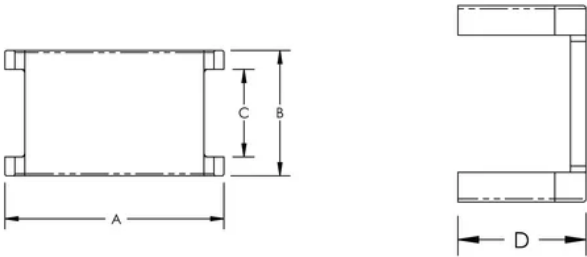
Table 2/2			
Catalog Number	Article Number	Conductor Size	Unit Weight

FLEXPLATE50	508180	220 mm², 360 mm², 545 mm², 640 mm²	0.16 kg
FLEXPLATE100	508181	960 mm², 1280 mm², 1810 mm²	0.32 kg

ADDITIONAL PRODUCT DETAILS

It is mandatory to use the HCBC Clamp associated with the HCBC Plate for proper Flexbus Conductor connection.

DIAGRAMS



WARNING

nVent products shall be installed and used only as indicated in nVent's product instruction sheets and training materials. Instruction sheets are available at www.nvent.com and from your nVent customer service representative. Improper installation, misuse, misapplication or other failure to completely follow nVent's instructions and warnings may cause product malfunction, property damage, serious bodily injury and death and/or void your warranty.

North America +1.800.753.9221 Option 1 – Customer Care Option 2 – Technical Support	Europe Netherlands: +31 800-0200135 France: +33 800 901 793	Europe Germany: 800 1890272 Other Countries: +31 13 5835404	APAC Shanghai: + 86 21 2412 1618/19 Sydney: +61 2 9751 8500
---	--	--	--