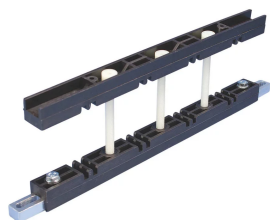


COMPACT BUSBAR SUPPORT WITH NEUTRAL CIRCUIT



CERTIFICATIONS



FEATURES

- Compact design fits in 400 mm (15 3/4") deep panels
- Includes mounting holes for direct fixing of protection screen
- Installs quickly and easily
- Halogen free
- RoHS compliant

SPECIFICATIONS

Busbar Width:	25 - 80 mm
Typical Application Current Rating:	250 - 1600 A
Max Working Voltage, IEC (Ui):	1000;1500
Material:	Aluminum;Glass Fibre Reinforced Polyamide
Complies With:	IEC® 60439.1;IEC® 61439.1;IEC® 60695-2-11 (Glow Wire Test 960 °C)
Flammability Rating:	UL® 94V-0
Working Temperature:	-40 to 130 °C

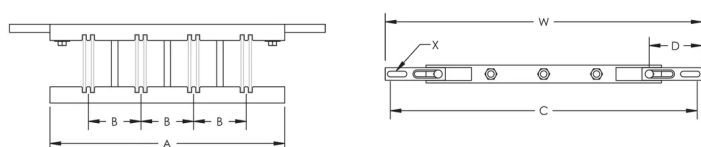
Table 1/2						
Catalog Number	Article Number	Busbars per Phase	Busbar Thickness	Width (W)	A	B

CBS-B2-5TN	551151	1 - 2	5 mm	338 - 390 mm	290 mm	65 mm
CBS-B1-10TN	551181	1	10 mm	338 - 390 mm	290 mm	60 mm

Table 2/2

Catalog Number	Article Number	C	D	X
CBS-B2-5TN	551151	325 - 377 mm	65 mm	6.5 x 23 mm
CBS-B1-10TN	551181	325 - 377 mm	65 mm	6.5 x 23 mm

DIAGRAMS



WARNING

nVent products shall be installed and used only as indicated in nVent's product instruction sheets and training materials. Instruction sheets are available at www.nvent.com and from your nVent customer service representative. Improper installation, misuse, misapplication or other failure to completely follow nVent's instructions and warnings may cause product malfunction, property damage, serious bodily injury and death and/or void your warranty.

North America

+1.800.753.9221
Option 1 – Customer Care
Option 2 – Technical Support

Europe

Netherlands:
+31 800-0200135
France:
+33 800 901 793

Europe

Germany:
800 1890272
Other Countries:
+31 13 5835404

APAC

Shanghai:
+ 86 21 2412 1618/19
Sydney:
+61 2 9751 8500



Our powerful portfolio of brands:
nVent.com CADDY ERICO HOFFMAN RAYCHEM SCHROFF
TRACER