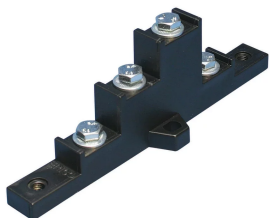


BS-250A FOUR POLE INSULATING SUPPORT



CERTIFICATIONS



FEATURES

Create custom four pole distribution blocks for an electrical distribution system

Mounts with screws

Protection screen can be fixed using spacers

Halogen free

RoHS compliant

SPECIFICATIONS

Table 1/3

Catalog Number	Article Number	Material	Finish	Max Working Voltage, IEC (Ui)	Working Temperature	Typical Application Current Rating
BS-250A	551300	Steel, Glass Fibre Reinforced Polyamide	Electrogalvanized	630, 630	-40 to 130 °C	160 - 250 A

Table 2/3

Catalog Number	Article Number	Complies With	Flammability Rating	Busbar Width	Busbar Thickness	Depth (D)
----------------	----------------	---------------	---------------------	--------------	------------------	-----------

BS-250A	551300	IEC® 60439.1, IEC® 61439.1, IEC® 60695-2-11 (Glow Wire Test 960 °C)	UL® 94V-0	15 - 20 mm	5 mm	45mm
---------	--------	--	-----------	------------	------	------

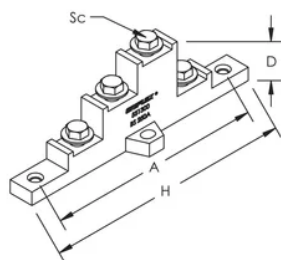
Table 3/3

Catalog Number	Article Number	Height (H)	A	Screw Diameter (Sc)	Unit Weight
BS-250A	551300	150 mm	130 mm	6	0.05 kg

ADDITIONAL PRODUCT DETAILS

Must be used with copper busbars.

DIAGRAMS



WARNING

nVent products shall be installed and used only as indicated in nVent's product instruction sheets and training materials. Instruction sheets are available at www.nvent.com and from your nVent customer service representative. Improper installation, misuse, misapplication or other failure to completely follow nVent's instructions and warnings may cause product malfunction, property damage, serious bodily injury and death and/or void your warranty.

North America

+1.800.753.9221

Option 1 – Customer Care

Option 2 – Technical Support

Europe

Netherlands:

+31 800-0200135

France:

+33 800 901 793

Europe

Germany:

800 1890272

Other Countries:

+31 13 5835404

APAC

Shanghai:

+ 86 21 2412 1618/19

Sydney:

+61 2 9751 8500



Our powerful portfolio of brands:
nVent.com CADDY ERICO HOFFMAN RAYCHEM SCHROFF
TRACER