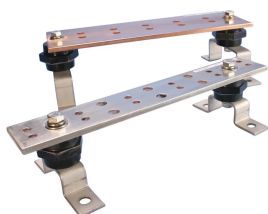


## TELECOM GROUNDING BUSBAR



### CERTIFICATIONS



### FEATURES

Meets TIA-607-C and TIA-607-D conforms to BICSI® recommendations

Complies with NEMA® standards

Accepts two hole lugs with 5/16" or 7/16" bolt holes (hardware not included)

Telecom grounding busbar splice kits are available to extend the length of the busbar

### SPECIFICATIONS

**Thickness (T):** 6.35 mm

**Width (W):** 50.8 mm

**Material:** Copper

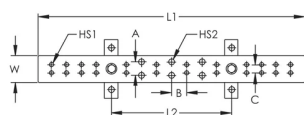
Table 1/2

Catalog Number	Tin Plating	Length 1 (L1)	Length 2 (L2)	Hole Size 1 (HS1)	Hole Size 1 Number of Pairs	Hole Size 2 (HS2)
TGBA12L06P	No	305 mm	229 mm	8 mm	6	11 mm
TGBA12L06PT	Yes	305 mm	229 mm	8 mm	6	11 mm
TGBA20L12PT	Yes	508 mm	229 mm	8 mm	12	11 mm
TGBA24L14P	No	610 mm	457 mm	8 mm	14	11 mm

Catalog Number	Tin Plating	Length 1(L1)	Length 2(L2)	Hole Size 1 (HS1)	Hole Size 1 Number of Pairs	Hole Size 2 (HS2)
TGBA24L14PT	Yes	610 mm	457 mm	8 mm	14	11 mm
TGBA29L18PT	Yes	737 mm	457 mm	8 mm	18	11 mm

Table 2/2				
Catalog Number	Hole Size 2 Number of Pairs	A	B	C
TGBA12L06P	3	25.4 mm	28.6 mm	15.9 mm
TGBA12L06PT	3	25.4 mm	28.6 mm	15.9 mm
TGBA20L12PT	3	25.4 mm	28.6 mm	15.9 mm
TGBA24L14P	5	25.4 mm	28.6 mm	15.9 mm
TGBA24L14PT	5	25.4 mm	28.6 mm	15.9 mm
TGBA29L18PT	5	25.4 mm	28.6 mm	15.9 mm

## DIAGRAMS



## WARNING

nVent products shall be installed and used only as indicated in nVent's product instruction sheets and training materials. Instruction sheets are available at [www.nvent.com](http://www.nvent.com) and from your nVent customer service representative. Improper installation, misuse, misapplication or other failure to completely follow nVent's instructions and warnings may cause product malfunction, property damage, serious bodily injury and death and/or void your warranty.

**⚠ WARNING:** This product can expose you to chemicals including lead, which is known to the State of California to cause cancer and birth defects or other reproductive harm. For more information go to [www.P65Warnings.ca.gov](http://www.P65Warnings.ca.gov).

#### North America

+1.800.753.9221

Option 1 – Customer Care

Option 2 – Technical Support

#### Europe

Netherlands:

+31 800-0200135

France:

+33 800 901 793

#### Europe

Germany:

800 1890272

Other Countries:

+31 13 5835404

#### APAC

Shanghai:

+ 86 21 2412 1618/19

Sydney:

+61 2 9751 8500



Our powerful portfolio of brands:  
**nVent.com CADDY ERICO HOFFMAN RAYCHEM SCHROFF**  
**TRACER**