

## NVENT ERIFLEX FLEXBUS HCBC PLATE WITH PE CONNECTION



### CERTIFICATIONS



### FEATURES

Rigid tinned copper part provides strong electrical contact to maintain braid expansion during compression

HCBC Plate allows Flexbus Conductor insulation to overlap the connection palm

HCBC Plate with PE connection allows conductor to be added to interconnect neutral and ground/earth

Tinned copper allows for copper or aluminum conductor connections

Installs quickly and easily

RoHS compliant

### SPECIFICATIONS

**Material:** Copper

**Finish:** Tinned

Table 1/2

Catalog Number	Article Number	E	Thickness (T)	Conductor Size	A	Hole Size 2 (HS2)
FLEXPLATE100 PE	508183	70mm	5mm	960 mm <sup>2</sup> , 1280 mm <sup>2</sup> , 1810 mm <sup>2</sup>	115mm	18.5mm

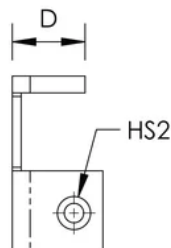
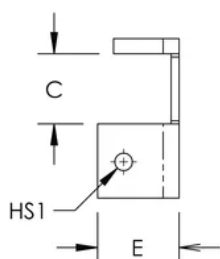
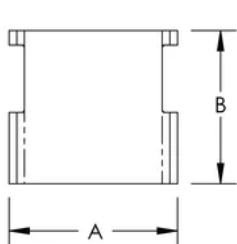
Catalog Number	Article Number	E	Thickness(T)	Conductor Size	A	Hole Size 2 (HS2)
FLEXPLATE50PE	508182	70mm	5mm	220 mm <sup>2</sup> , 360 mm <sup>2</sup> , 545 mm <sup>2</sup> , 640 mm <sup>2</sup>	65mm	14.5mm

Table 2/2						
Catalog Number	Article Number	Hole Size 1 (HS1)	B	Unit Weight	C	D
FLEXPLATE100PE	508183	12.5mm	100mm	0.71kg	45mm	51mm
FLEXPLATE50PE	508182	10.5mm	100mm	0.49kg	45mm	41mm

## ADDITIONAL PRODUCT DETAILS

It is mandatory to use the HCBC Clamp associated with the HCBC Plate for proper Flexbus Conductor connection.

## DIAGRAMS



## WARNING

nVent products shall be installed and used only as indicated in nVent's product instruction sheets and training materials. Instruction sheets are available at [www.nvent.com](http://www.nvent.com) and from your nVent customer service representative. Improper installation, misuse, misapplication or other failure to completely follow nVent's instructions and warnings may cause product malfunction, property damage, serious bodily injury and death and/or void your warranty.



Our powerful portfolio of brands:  
**nVent.com CADDY ERICO HOFFMAN RAYCHEM SCHROFF**  
**TRACER**