



## UNIVERSAL RESTRAINT CLIP



### CERTIFICATIONS



### FEATURES

Attaches cable brace to structure

Meets CEN/TS 17551:2021 requirements for Seismic Sway Bracing

### SPECIFICATIONS

**Finish:** Electrogalvanized

Table 1/2

Catalog Number	Article Number	Material	Brace Size	Hole Size (HS)	Thickness (T)	UL Listed Load
CSBURC12	402199	Steel	#12, #18, #36	14 mm	4.27 mm	3430N
CSBURC38	402198	Steel	#12, #18, #36	11 mm	4.27 mm	3430N
CSBURC38SS	402522	Stainless Steel 316 (EN 1.4401)	#12, #18, #36	11 mm	4.27 mm	2750N
CSBURC58	402200	Steel	#12, #18, #36	17 mm	4.27 mm	3430N
CSBURC58SS	402564	Stainless Steel 316 (EN 1.4401)	#12, #18, #36	17 mm	4.27 mm	2750N

Table 2/2

Catalog Number	Article Number	Certifications
CSBURC12	402199	ICC-ES (Seismic Cable Bracing), ICC-ES, UL, OSHPD/HCAI, cUL
CSBURC38	402198	ICC-ES (Seismic Cable Bracing), ICC-ES, UL, OSHPD/HCAI, cUL
CSBURC38SS	402522	
CSBURC58	402200	ICC-ES (Seismic Cable Bracing), ICC-ES, UL, OSHPD/HCAI, cUL
CSBURC58SS	402564	

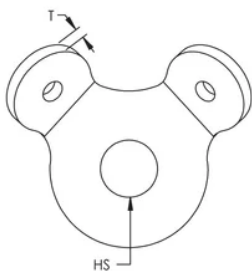
## ADDITIONAL PRODUCT DETAILS

Brace member is not included.

Mount to the structure using the center hole. Loop cable through the holes in the bent tabs and swage in place.

UL Loads		
Part Number	Brace Member	Load Rating
CSBURC38	CSB12CBL	1859 N
	CSB18CBL	3434 N
	CSB36CBL	8492 N
CSBURC12	CSB12CBL	1859 N
	CSB18CBL	3434 N
	CSB36CBL	8492 N
CSBURC58	CSB12CBL	1859 N
	CSB18CBL	3434 N
	CSB36CBL	8492 N

## DIAGRAMS



**WARNING**

nVent products shall be installed and used only as indicated in nVent's product instruction sheets and training materials. Instruction sheets are available at [www.nvent.com](http://www.nvent.com) and from your nVent customer service representative. Improper installation, misuse, misapplication or other failure to completely follow nVent's instructions and warnings may cause product malfunction, property damage, serious bodily injury and death and/or void your warranty.

**North America**

+1.800.753.9221  
Option 1 – Customer Care  
Option 2 – Technical Support

**Europe**

Netherlands:  
+31 800-0200135  
France:  
+33 800 901 793

**Europe**

Germany:  
800 1890272  
Other Countries:  
+31 13 5835404

**APAC**

Shanghai:  
+ 86 21 2412 1618/19  
Sydney:  
+61 2 9751 8500



Our powerful portfolio of brands:  
**nVent.com CADDY ERICO HOFFMAN RAYCHEM SCHROFF**  
**TRACER**