

U-CHANNEL CANTILEVER ARM, PERFORATED WITH BRACE



FEATURES

U-Profile cantilever arm with brace

Perforated/slotted design

SPECIFICATIONS

Finish: Hot-Dip Galvanized

Material: Steel

Table 1/1

| Catalog Number | Article Number | Length (L) | Height (H) | Width (W) | Hole Size (HS) |
|----------------|----------------|------------|------------|-----------|----------------|
| CUCS0250HD | 312110 | 250 mm | 230 mm | 40 mm | 13 mm |
| CUCS0300HD | 312120 | 300 mm | 230 mm | 40 mm | 13 mm |
| CUCS0400HD | 312140 | 400 mm | 230 mm | 40 mm | 13 mm |
| CUCS0500HD | 312160 | 500 mm | 230 mm | 40 mm | 13 mm |
| CUCS0600HD | 312170 | 600 mm | 230 mm | 40 mm | 13 mm |
| CUCS0800HD | 312180 | 800 mm | 400 mm | 40 mm | 13 mm |
| CUCS1000HD | 312190 | 1000 mm | 400 mm | 40 mm | 13 mm |
| CUCS1300HD | 312195 | 1300 mm | 400 mm | 40 mm | 13 mm |

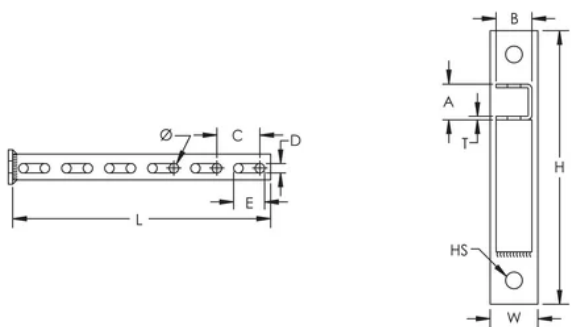
Thickness (T): 3 mm

D: 11 mm

Diameter (Ø): 11 mm

| | |
|-----------|-------|
| A: | 30 mm |
| B: | 30 mm |
| E: | 36 mm |
| C: | 50 mm |

DIAGRAMS



WARNING

nVent products shall be installed and used only as indicated in nVent's product instruction sheets and training materials. Instruction sheets are available at www.nvent.com and from your nVent customer service representative. Improper installation, misuse, misapplication or other failure to completely follow nVent's instructions and warnings may cause product malfunction, property damage, serious bodily injury and death and/or void your warranty.

| | | | |
|------------------------------|-----------------|------------------|----------------------|
| North America | Europe | Europe | APAC |
| +1.800.753.9221 | Netherlands: | Germany: | Shanghai: |
| Option 1 – Customer Care | +31 800-0200135 | 800 1890272 | + 86 21 2412 1618/19 |
| Option 2 – Technical Support | France: | Other Countries: | Sydney: |
| | +33 800 901 793 | +31 13 5835404 | +61 2 9751 8500 |



Our powerful portfolio of brands:
nVent.com CADDY ERICO HOFFMAN RAYCHEM SCHROFF
TRACER