



NVENT CADDY SPEED LINK LIGHT PACK WITH NAIL GUN BRACKET



The nVent CADDY Speed Link Light Pack with Nail Gun Bracket includes a precut length of 1mm wire rope riveted to an angle bracket designed for direct fastening together with an ultra-low-profile locking device. Contractors can quickly and safely install it to the concrete ceiling using a wide range of nail guns to support and secure lighting and signage.

FEATURES

Complete system includes wire, locking device and concrete nail gun insert bracket

Clips onto nozzle of gas or battery-actuated nail guns allowing for hands-off installation at structure or from the floor using a pole

Longer leg angle bracket for tool clearance

Quickly and easily attaches to concrete, steel or composite metal decking

SPECIFICATIONS

| | |
|-----------------------------------|-------------------|
| Static Load Safety Factor: | 5:1 |
| Material: | Steel;Brass |
| Finish: | Electrogalvanized |

Table 1/1

| Catalog Number | Article Number | Wire Rope Diameter | Wire Rope Length | A | B | Static Load (F) |
|----------------|----------------|--------------------|------------------|-------|---------|-----------------|
| CLP1L1GBSF | 196091 | 1 mm | 1m | 38 mm | 25.5 mm | 100N |
| CLP1L2GBSF | 196092 | 1 mm | 2m | 38 mm | 25.5 mm | 100N |

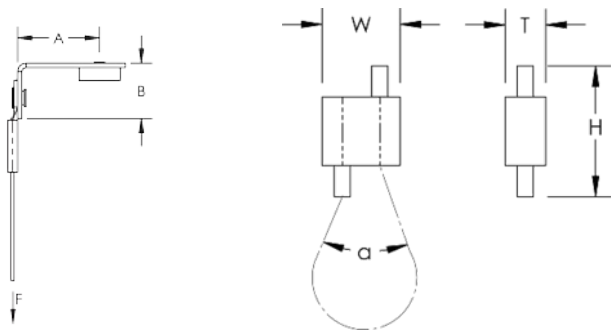
| | |
|-----------------------|---------|
| Thickness (T): | 6.5 mm |
| Width (W): | 12.5 mm |
| Height (H): | 21 mm |
| Angle (a): | 60 ° |

ADDITIONAL PRODUCT DETAILS

Static Load represents the static load of the nail gun insert assembly. Please consult with the nail manufacturer to evaluate the static load of the nail and type of concrete used for the installation. Maximum load is the lesser of the static load from the nail manufacturer or the published load for the assembly.

Nail gun insert is compatible with BeA® CN60-688ES, Hilti® BX 3, GX 3, DEWALT® Trak-It C3, SPIT® PULSA 40E, 800E, 700, 1000 or equivalent nailers.

DIAGRAMS



WARNING

nVent products shall be installed and used only as indicated in nVent's product instruction sheets and training materials. Instruction sheets are available at www.nvent.com and from your nVent customer service representative. Improper installation, misuse, misapplication or other failure to completely follow nVent's instructions and warnings may cause product malfunction, property damage, serious bodily injury and death and/or void your warranty.

North America

+1.800.753.9221
Option 1 – Customer Care
Option 2 – Technical Support

Europe

Netherlands:
+31 800-0200135
France:
+33 800 901 793

Europe

Germany:
800 1890272
Other Countries:
+31 13 5835404

APAC

Shanghai:
+ 86 21 2412 1618/19
Sydney:
+61 2 9751 8500



Our powerful portfolio of brands:
nVent.com CADDY ERICO HOFFMAN RAYCHEM SCHROFF
TRACER