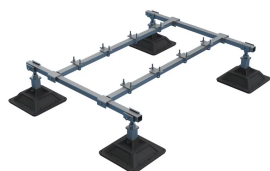




NVENT CADDY PYRAMID EQUIPMENT SUPPORT KIT, 4 POST BASE



CERTIFICATIONS



FEATURES

- Kit includes post-base assemblies, frame and equipment-support clamps
- Assembles and adjusts to size and height in minutes by one person with one tool
- Innovative crossbar and equipment-support clamps enable quick assembly
- Integral foam pad provides gentle interface for all roof types
- Hot-dip galvanized and UV stabilized for long lasting performance
- Assembled support can be lifted as one unit and easily relocated

SPECIFICATIONS

| Table 1/3 | | | | | | |
|----------------|----------------|------------------------------------|--------------------|----------------|--------------|------------|
| Catalog Number | Article Number | Material | Finish | Temperature | Height (H) | Length (L) |
| PEK4B | 360426 | Steel, Polypropylene, Polyethylene | Hot-Dip Galvanized | -34 to 54.4 °C | 305 - 457 mm | 1257 mm |

Table 2/3

| Catalog Number | Article Number | Post Base (A) | Square Tube (B) | Cross Bar Assembly (C) | Width (W) | Surface Area |
|----------------|----------------|---------------|-----------------|------------------------|-----------|--------------------|
| PEK4B | 360426 | 314 mm x 4 pc | 1067 mm x 2 pc | 1232 mm x 2 pc | 1588 mm | 0.36m ² |

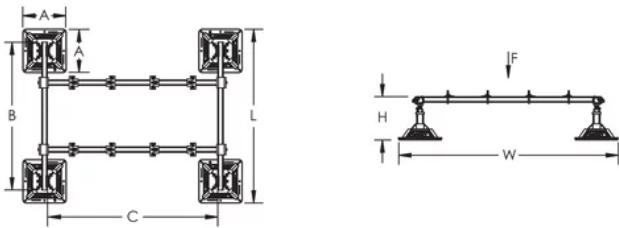
Table 3/3

| Catalog Number | Article Number | Unit Weight | Ultimate Static Load (F) | Static Load Safety Factor |
|----------------|----------------|-------------|--------------------------|---------------------------|
| PEK4B | 360426 | 36 kg | 4980N | 3:1 |

ADDITIONAL PRODUCT DETAILS

Static load must be stable and uniformly distributed across frame.

DIAGRAMS



WARNING

nVent products shall be installed and used only as indicated in nVent's product instruction sheets and training materials. Instruction sheets are available at www.nvent.com and from your nVent customer service representative. Improper installation, misuse, misapplication or other failure to completely follow nVent's instructions and warnings may cause product malfunction, property damage, serious bodily injury and death and/or void your warranty.

North America

+1.800.753.9221

Option 1 – Customer Care

Option 2 – Technical Support

Europe

Netherlands:

+31 800-0200135

France:

+33 800 901 793

Europe

Germany:

800 1890272

Other Countries:

+31 13 5835404

APAC

Shanghai:

+ 86 21 2412 1618/19

Sydney:

+61 2 9751 8500



Our powerful portfolio of brands:
nVent.com CADDY ERICO HOFFMAN RAYCHEM SCHROFF
TRACER