



ECN NUT FOR C-CHANNEL E5



FEATURES

Channel nut for C-Profiles

SPECIFICATIONS

Finish: Hot-Dip Galvanized

Table 1/1

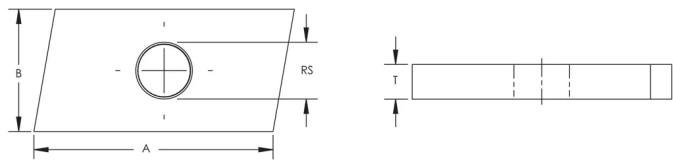
| Catalog Number | Article Number | Material | Rod Size (RS) | Thickness (T) | A | B |
|----------------|----------------|---------------------------------|---------------|---------------|-------|-------|
| E5CN6HD | 335170 | Steel | 6 | 5 mm | 22 mm | 13 mm |
| E5CN6S4 | 335200 | Stainless Steel 304 (EN 1.4301) | 6 | 5 mm | 22 mm | 13 mm |
| E5CN10HD | 335190 | Steel | 10 | 6 mm | 22 mm | 13 mm |
| E5CN8HD | 335180 | Steel | 8 | 6 mm | 22 mm | 13 mm |

ADDITIONAL PRODUCT DETAILS

Sliding force F2 is limited to 600 N for all types of Nuts and T-Bolts for C-channel System.

| Nuts and T-Bolts for C-channel System | |
|---------------------------------------|------------------|
| C-Channel Type | Pullout Force F1 |
| E5 | 2600 N |

DIAGRAMS



WARNING

nVent products shall be installed and used only as indicated in nVent's product instruction sheets and training materials. Instruction sheets are available at www.nvent.com and from your nVent customer service representative. Improper installation, misuse, misapplication or other failure to completely follow nVent's instructions and warnings may cause product malfunction, property damage, serious bodily injury and death and/or void your warranty.

North America

+1.800.753.9221
Option 1 – Customer Care
Option 2 – Technical Support

Europe

Netherlands:
+31 800-0200135
France:
+33 800 901 793

Europe

Germany:
800 1890272
Other Countries:
+31 13 5835404

APAC

Shanghai:
+ 86 21 2412 1618/19
Sydney:
+61 2 9751 8500



Our powerful portfolio of brands:
nVent.com CADDY ERICO HOFFMAN RAYCHEM SCHROFF
TRACER