



## 605 TWO-ROD ROLLER HANGER



### FEATURES

Suspends pipe from two rods where longitudinal movement in pipe may occur due to expansion or contraction

Conforms with Federal Specification WW-H-171 (Type 42), Manufacturers Standardization Society ANSI®/MSS-SP-58 (Type 41)

### SPECIFICATIONS

**Material:** Steel;Cast Iron

**Finish:** Hot-Dip Galvanized;Electrogalvanized

Table 1/1

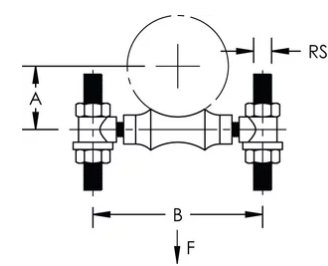
Catalog Number	Pipe Size	Pipe Size Range	Rod Size (RS)	A	B	Static Load (F)
6050600HD	6"	6 in	20	101.6 mm	250.8 mm	4700N
6050800HD	8"	8 in	22	130.18 mm	304.8 mm	6000N
6051000HD	10"	10 in	22	161.93 mm	355.6 mm	7600N
6051200HD	12"	12 in	22	190.5 mm	419.1 mm	10600N
6052000HD	20"	20 in	32	295.28 mm	622.3 mm	20200N
6052400HD	24"	24 in	38	355.6 mm	731.8 mm	27400N

### ADDITIONAL PRODUCT DETAILS

Roll and sockets are hot-dip galvanized cast iron and axle is electrogalvanized carbon steel.

Install in accordance with applicable code.

DIAGRAMS



WARNING

nVent products shall be installed and used only as indicated in nVent's product instruction sheets and training materials. Instruction sheets are available at [www.nvent.com](http://www.nvent.com) and from your nVent customer service representative. Improper installation, misuse, misapplication or other failure to completely follow nVent's instructions and warnings may cause product malfunction, property damage, serious bodily injury and death and/or void your warranty.

North America

+1.800.753.9221  
Option 1 – Customer Care  
Option 2 – Technical Support

Europe

Netherlands:  
+31 800-0200135  
France:  
+33 800 901 793

Europe

Germany:  
800 1890272  
Other Countries:  
+31 13 5835404

APAC

Shanghai:  
+ 86 21 2412 1618/19  
Sydney:  
+61 2 9751 8500



Our powerful portfolio of brands:  
**nVent.com CADDY ERICO HOFFMAN RAYCHEM SCHROFF**  
**TRACER**