



# 108 TWO HOLE STRAP FOR CPVC PIPE



## CERTIFICATIONS



## FEATURES

- Includes flared edges to protect piping
- Rated for use with CPVC fire sprinkler pipe
- Includes mounting screws

## SPECIFICATIONS

- Finish:** Pregalvanized
- Material:** Steel

Table 1/2

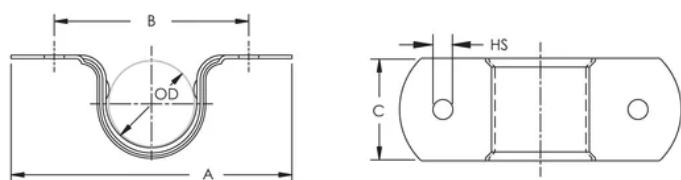
| Catalog Number | Article Number | Pipe Size | NB/DN | Outer Diameter (OD) | Hole Size (HS) | A        |
|----------------|----------------|-----------|-------|---------------------|----------------|----------|
| 1080075EG      | 597822         | 3/4"      | 20    | 26.9 mm             | 5.8 mm         | 82.6 mm  |
| 1080100EG      | 597823         | 1"        | 25    | 33.7 mm             | 5.8 mm         | 88.9 mm  |
| 1080125EG      | 597824         | 1 1/4"    | 32    | 42.2 mm             | 5.8 mm         | 108 mm   |
| 1080150EG      | 597825         | 1 1/2"    | 40    | 48.3 mm             | 5.8 mm         | 112.7 mm |

| Catalog Number | Article Number | Pipe Size | NB/DN | Outer Diameter (OD) | Hole Size (HS) | A        |
|----------------|----------------|-----------|-------|---------------------|----------------|----------|
| 1080200EG      | 597826         | 2"        | 50    | 60.3 mm             | 5.8 mm         | 125.4 mm |

Table 2/2

| Catalog Number | Article Number | B       | C       | Hanger Spacing |
|----------------|----------------|---------|---------|----------------|
| 1080075EG      | 597822         | 57.2 mm | 30.2 mm | 1.65 m Max     |
| 1080100EG      | 597823         | 63.5 mm | 30.2 mm | 1.8 m Max      |
| 1080125EG      | 597824         | 82.6 mm | 30.2 mm | 1.95 m Max     |
| 1080150EG      | 597825         | 87.3 mm | 30.2 mm | 2.1 m Max      |
| 1080200EG      | 597826         | 100 mm  | 30.2 mm | 2.4 m Max      |

## DIAGRAMS



## WARNING

nVent products shall be installed and used only as indicated in nVent's product instruction sheets and training materials. Instruction sheets are available at [www.nvent.com](http://www.nvent.com) and from your nVent customer service representative. Improper installation, misuse, misapplication or other failure to completely follow nVent's instructions and warnings may cause product malfunction, property damage, serious bodily injury and death and/or void your warranty.

#### North America

+1.800.753.9221

Option 1 – Customer Care

Option 2 – Technical Support

#### Europe

Netherlands:

+31 800-0200135

France:

+33 800 901 793

#### Europe

Germany:

800 1890272

Other Countries:

+31 13 5835404

#### APAC

Shanghai:

+ 86 21 2412 1618/19

Sydney:

+61 2 9751 8500



Our powerful portfolio of brands:  
**nVent.com CADDY ERICO HOFFMAN RAYCHEM SCHROFF**  
**TRACER**