

# NVENT ERICO ERICORE TERMINAL ADAPTER



## FEATURES

Provides connection from conventional air terminal to nVent ERICO Ericore conductor

## SPECIFICATIONS

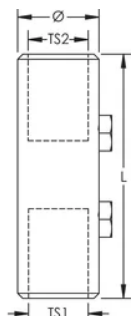
Table 1/2

Catalog Number	Article Number	Material	Diameter (Ø)	Length (L)	Thread Size 1 (TS1)	Thread Size 2 (TS2)
ERICOREAD15MM	702302	Brass	25.4 mm	76.2 mm	1/2" BSPP	M16

Table 2/2

Catalog Number	Article Number	Unit Weight
ERICOREAD15MM	702302	0.13 kg

## DIAGRAMS



**WARNING**

nVent products shall be installed and used only as indicated in nVent's product instruction sheets and training materials. Instruction sheets are available at [www.nvent.com](http://www.nvent.com) and from your nVent customer service representative. Improper installation, misuse, misapplication or other failure to completely follow nVent's instructions and warnings may cause product malfunction, property damage, serious bodily injury and death and/or void your warranty.

⚠ **WARNING:** This product can expose you to chemicals including lead, which is known to the State of California to cause cancer and birth defects or other reproductive harm. For more information go to [www.P65Warnings.ca.gov](http://www.P65Warnings.ca.gov).

**North America**

+1.800.753.9221  
Option 1 – Customer Care  
Option 2 – Technical Support

**Europe**

Netherlands:  
+31 800-0200135  
France:  
+33 800 901 793

**Europe**

Germany:  
800 1890272  
Other Countries:  
+31 13 5835404

**APAC**

Shanghai:  
+ 86 21 2412 1618/19  
Sydney:  
+61 2 9751 8500



Our powerful portfolio of brands:  
**nVent.com CADDY ERICO HOFFMAN RAYCHEM SCHROFF**  
**TRACER**