

TELECOM MAIN GROUNDING BUSBAR



CERTIFICATIONS



FEATURES

Meets TIA-607-C and TIA-607-D and conforms to BICSI® recommendations

Complies with NEMA® standards

Accepts two hole lugs with 5/16" or 7/16" bolt holes (hardware not included)

Telecom grounding busbar splice kits are available to extend the length of the busbar

SPECIFICATIONS

Thickness (T): 6.35mm
Width (W): 101.6mm
Material: Copper

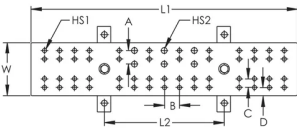
Table 1/2

| Catalog Number | Length 1 (L1) | Length 2 (L2) | Tin Plating | Hole Size 1 Number of Pairs | Hole Size 2 Number of Pairs | C |
|----------------|---------------|---------------|-------------|-----------------------------|-----------------------------|--------|
| TMGBA12L15P | 305mm | 229mm | No | 15 | 3 | 15.9mm |
| TMGBA12L15PT | 305mm | 229mm | Yes | 15 | 3 | 15.9mm |

| Catalog Number | Length 1(L1) | Length 2(L2) | Tin Plating | Hole Size 1 Number of Pairs | Hole Size 2 Number of Pairs | C |
|----------------|--------------|--------------|-------------|--------------------------------|--------------------------------|--------|
| TMGBA16L19P | 394mm | 229mm | No | 19 | 3 | 15.9mm |
| TMGBA16L19PT | 394mm | 229mm | Yes | 19 | 3 | 15.9mm |
| TMGBA18L23P | 451mm | 229mm | No | 23 | 3 | 15.9mm |
| TMGBA18L23PT | 451mm | 229mm | Yes | 23 | 3 | 15.9mm |
| TMGBA20L27P | 508mm | 229mm | No | 27 | 3 | 15.9mm |
| TMGBA20L27PT | 508mm | 229mm | Yes | 27 | 3 | 15.9mm |
| TMGBA24L33P | 610mm | 457mm | No | 33 | 5 | 15.9mm |
| TMGBA24L33PT | 610mm | 457mm | Yes | 33 | 5 | 15.9mm |
| TMGBA29L41P | 737mm | 457mm | No | 41 | 5 | 15.9mm |
| TMGBA29L41PT | 737mm | 457mm | Yes | 41 | 5 | 15.9mm |

| Table 2/2 | | | | | |
|----------------|--------|--------|--------|----------------------|----------------------|
| Catalog Number | B | A | D | Hole Size 1 (HS1) | Hole Size 2 (HS2) |
| TMGBA12L15P | 28.6mm | 25.4mm | 15.9mm | 0.3125in | 0.4375in |
| TMGBA12L15PT | 28.6mm | 25.4mm | 15.9mm | 0.3125in | 0.4375in |
| TMGBA16L19P | 28.6mm | 25.4mm | 15.9mm | 0.3125in | 0.4375in |
| TMGBA16L19PT | 28.6mm | 25.4mm | 15.9mm | 0.3125in | 0.4375in |
| TMGBA18L23P | 28.6mm | 25.4mm | 15.9mm | 0.3125in | 0.4375in |
| TMGBA18L23PT | 28.6mm | 25.4mm | 15.9mm | 0.3125in | 0.4375in |
| TMGBA20L27P | 28.6mm | 25.4mm | 15.9mm | 0.3125in | 0.4375in |
| TMGBA20L27PT | 28.6mm | 25.4mm | 15.9mm | 0.3125in | 0.4375in |
| TMGBA24L33P | 28.6mm | 25.4mm | 15.9mm | 0.3125in | 0.4375in |
| TMGBA24L33PT | 28.6mm | 25.4mm | 15.9mm | 0.3125in | 0.4375in |
| TMGBA29L41P | 28.6mm | 25.4mm | 15.9mm | 0.3125in | 0.4375in |
| TMGBA29L41PT | 28.6mm | 25.4mm | 15.9mm | 0.3125in | 0.4375in |

DIAGRAMS



WARNING

nVent products shall be installed and used only as indicated in nVent's product instruction sheets and training materials. Instruction sheets are available at www.nvent.com and from your nVent customer service representative. Improper installation, misuse, misapplication or other failure to completely follow nVent's instructions and warnings may cause product malfunction, property damage, serious bodily injury and death and/or void your warranty.



Our powerful portfolio of brands:
nVent.com CADDY ERICO HOFFMAN RAYCHEM SCHROFF
TRACER