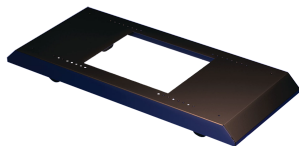


## MOBILE BASE FOR OPEN FRAME RACKS



The Mobile Base for Open-Frame Racks provide stability and mobility to open-frame racks. It has models for both 19-in. 2- and 4-Post Open Frame Racks. This product mounts to the bottom of the racks previously mentioned. It includes four non-locking casters but will also accept standard levelers. Please note, catalog number PMBLM12 must be ordered separately, however the mounting hardware is included.

### FEATURES

The Mobile Base for Open-Frame Racks provide stability and mobility to open-frame racks

It has models for both 19-in. 2- and 4-Post Open Frame Racks

This product mounts to the bottom of the racks previously mentioned. It includes four non-locking casters but will also accept standard levelers

Please note, catalog number PMBLM12 must be ordered separately, however the mounting hardware is included

### SPECIFICATIONS

Table 1/2

Catalog Number	Article Number	Fits	Finish	Material	Color	Color Code
A19MB600	13772	2-post open-frame racks	Powder Coated	Mild Steel	Jet Black	RAL 9005
A19MB1000	13774	4-post open-frame racks with depth adjustable between 17.7- and 29.5-in. (450- and 750-mm) in 0.98-in. (25-mm) increments	Powder Coated	Mild Steel	Jet Black	RAL 9005

Table 2/2

Catalog Number	Article Number	Thickness
----------------	----------------	-----------

A19MB600	13772	2.66mm
A19MB1000	13774	2.66mm

**WARNING**

nVent products shall be installed and used only as indicated in nVent's product instruction sheets and training materials. Instruction sheets are available at [www.nvent.com](http://www.nvent.com) and from your nVent customer service representative. Improper installation, misuse, misapplication or other failure to completely follow nVent's instructions and warnings may cause product malfunction, property damage, serious bodily injury and death and/or void your warranty.



Our powerful portfolio of brands:  
**nVent.com CADDY ERICO HOFFMAN RAYCHEM SCHROFF**  
**TRACER**