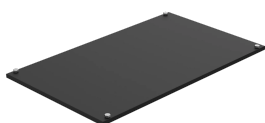


## PROLINE V/D SERVER CABINET SOLID SOLID TYPE 12, FITS 600X1000MM, BLACK, STEEL

### CATALOG NUMBER

**PT610B**



Robustly built and sealed for use in wet, dusty or hot environments, ProLine Type 12 Cabinets have optional cutouts to air condition voice/data equipment and servers.

### INDUSTRY STANDARDS

UL 508A Listed; Type 12; File Number E61997

cUL Listed per CSA C22.2 No 94; Type 12; File Number E61997

EIA RS-310-D

NEMA/EEMAC, Type 12

### FEATURES

Fully gasketed to keep contaminants away from equipment, reducing maintenance costs

Three-point locking handles on all doors provide easy but controlled access; two keys included

Rack angles are infinitely adjustable from front to rear for positioning flexibility

Mobile base provides easy placement of cabinet

Levelers and anti-tip bracket secure cabinet to the floor

AC package has cutout for easy in-the-field installation of SpectraCool G-Series Air Conditioner (shipped separately)

Mobile base includes casters, levelers and gland plate

Gland plate allows easy routing of cable

### PRODUCT ATTRIBUTES

Article Number: 15365

Height: 600mm

Width: 1000mm

Depth: 17mm

Material: Mild Steel

Finish: Powder Coated

Color: Jet Black

Color Code: RAL 9005

Thickness: 1.52mm

## ADDITIONAL PRODUCT DETAILS

---

Order air conditioner separately.

## WARNING

---

nVent products shall be installed and used only as indicated in nVent's product instruction sheets and training materials. Instruction sheets are available at [www.nvent.com](http://www.nvent.com) and from your nVent customer service representative. Improper installation, misuse, misapplication or other failure to completely follow nVent's instructions and warnings may cause product malfunction, property damage, serious bodily injury and death and/or void your warranty.



Our powerful portfolio of brands:  
**nVent.com CADDY ERICO HOFFMAN RAYCHEM SCHROFF**  
**TRACER**